

Anti-CLIC3 Antibody
Rabbit polyclonal antibody to CLIC3
Catalog # AP60554**Specification**

Anti-CLIC3 Antibody - Product Information

Application	WB
Primary Accession	O95833
Reactivity	Human, Mouse, Rat
Host	Rabbit
Clonality	Polyclonal
Calculated MW	26648

Anti-CLIC3 Antibody - Additional Information**Gene ID** 9022**Other Names**

Chloride intracellular channel protein 3

Target/Specificity

Recognizes endogenous levels of CLIC3 protein.

Dilution

WB~~WB (1/500 - 1/1000)

Format

Liquid in 0.42% Potassium phosphate, 0.87% Sodium chloride, pH 7.3, 30% glycerol, and 0.09% (W/V) sodium azide.

Storage

Store at -20 °C.Stable for 12 months from date of receipt

Anti-CLIC3 Antibody - Protein Information**Name** CLIC3**Function**

Can insert into membranes and form chloride ion channels. May participate in cellular growth control.

Cellular Location

Nucleus. Membrane; Single-pass membrane protein. Cytoplasm. Note=Predominantly nuclear. Some protein was found in the cytoplasm. Exists both as soluble cytoplasmic protein and as membrane protein with probably a single transmembrane domain (By similarity)

Tissue Location

Detected in placenta (at protein level). Widely expressed. High expression is found in placenta

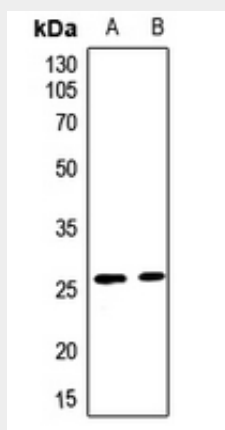
followed by lung and heart. Low expression in skeletal muscle, kidney and pancreas

Anti-CLIC3 Antibody - Protocols

Provided below are standard protocols that you may find useful for product applications.

- [Western Blot](#)
- [Blocking Peptides](#)
- [Dot Blot](#)
- [Immunohistochemistry](#)
- [Immunofluorescence](#)
- [Immunoprecipitation](#)
- [Flow Cytometry](#)
- [Cell Culture](#)

Anti-CLIC3 Antibody - Images



Western blot analysis of CLIC3 expression in mouse testis (A), rat lung (B) whole cell lysates.

Anti-CLIC3 Antibody - Background

KLH-conjugated synthetic peptide encompassing a sequence within the center region of human CLIC3. The exact sequence is proprietary.