

Anti-ELOVL5 Antibody
Rabbit polyclonal antibody to ELOVL5
Catalog # AP60562**Specification**

Anti-ELOVL5 Antibody - Product Information

Application	WB, IHC
Primary Accession	Q9NYP7
Reactivity	Human, Monkey
Host	Rabbit
Clonality	Polyclonal
Calculated MW	35293

Anti-ELOVL5 Antibody - Additional Information**Gene ID** 60481**Other Names**

ELOVL2; Elongation of very long chain fatty acids protein 5; 3-keto acyl-CoA synthase ELOVL5; ELOVL fatty acid elongase 5; ELOVL FA elongase 5; Fatty acid elongase 1; hELO1; Very-long-chain 3-oxoacyl-CoA synthase 5

Target/Specificity

KLH-conjugated synthetic peptide encompassing a sequence within the C-term region of human ELOVL5. The exact sequence is proprietary.

Dilution

WB~~WB (1/500 - 1/1000), IH (1/100 - 1/200)
IHC~~1:100~500

Format

Liquid in 0.42% Potassium phosphate, 0.87% Sodium chloride, pH 7.3, 30% glycerol, and 0.09% (W/V) sodium azide.

Storage

Store at -20 °C. Stable for 12 months from date of receipt

Anti-ELOVL5 Antibody - Protein Information**Name** ELOVL5 {ECO:0000255|HAMAP-Rule:MF_03205}**Synonyms** ELOVL2**Function**

Catalyzes the first and rate-limiting reaction of the four reactions that constitute the long-chain fatty acids elongation cycle. This endoplasmic reticulum-bound enzymatic process allows the addition of 2 carbons to the chain of long- and very long-chain fatty acids (VLCFAs) per cycle. Condensing enzyme that acts specifically toward polyunsaturated acyl-CoA with the higher activity

toward C18:3(n-6) acyl-CoA. May participate in the production of monounsaturated and of polyunsaturated VLCFAs of different chain lengths that are involved in multiple biological processes as precursors of membrane lipids and lipid mediators (By similarity) (PubMed:10970790, PubMed:20937905). In conditions where the essential linoleic and alpha linoleic fatty acids are lacking it is also involved in the synthesis of Mead acid from oleic acid (By similarity).

Cellular Location

Endoplasmic reticulum membrane {ECO:0000255|HAMAP-Rule:MF_03205, ECO:0000269|PubMed:20937905}; Multi- pass membrane protein {ECO:0000255|HAMAP-Rule:MF_03205}. Cell projection, dendrite {ECO:0000255|HAMAP-Rule:MF_03205, ECO:0000269|PubMed:25065913}. Note=In Purkinje cells, the protein localizes to the soma and proximal portion of the dendritic tree {ECO:0000255|HAMAP-Rule:MF_03205, ECO:0000269|PubMed:25065913}

Tissue Location

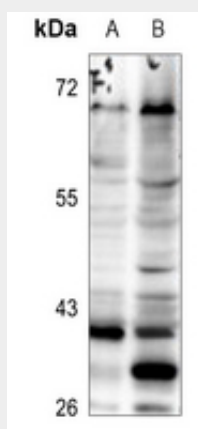
Ubiquitous. Highly expressed in the adrenal gland and testis. Weakly expressed in prostate, lung and brain. Expressed in the cerebellum.

Anti-ELOVL5 Antibody - Protocols

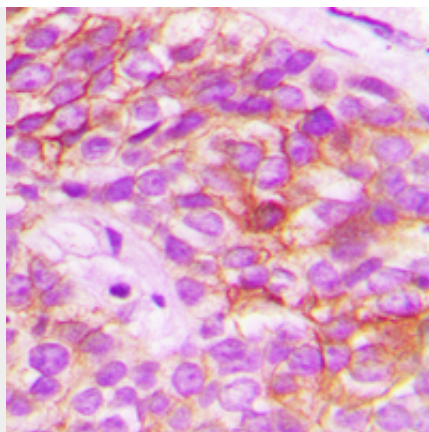
Provided below are standard protocols that you may find useful for product applications.

- [Western Blot](#)
- [Blocking Peptides](#)
- [Dot Blot](#)
- [Immunohistochemistry](#)
- [Immunofluorescence](#)
- [Immunoprecipitation](#)
- [Flow Cytometry](#)
- [Cell Culture](#)

Anti-ELOVL5 Antibody - Images



Western blot analysis of ELOVL5 expression in HEK293T (A), COS7 (B) whole cell lysates.



Immunohistochemical analysis of ELOVL5 staining in human breast cancer formalin fixed paraffin embedded tissue section. The section was pre-treated using heat mediated antigen retrieval with sodium citrate buffer (pH 6.0). The section was then incubated with the antibody at room temperature and detected using an HRP conjugated compact polymer system. DAB was used as the chromogen. The section was then counterstained with haematoxylin and mounted with DPX.

Anti-ELOVL5 Antibody - Background

KLH-conjugated synthetic peptide encompassing a sequence within the C-term region of human ELOVL5. The exact sequence is proprietary.