

Anti-CRSP8 Antibody
Rabbit polyclonal antibody to CRSP8
Catalog # AP60591**Specification**

Anti-CRSP8 Antibody - Product Information

Application	WB
Primary Accession	Q6P2C8
Other Accession	Q9DB40
Reactivity	Human, Mouse, Rat, Pig, Bovine
Host	Rabbit
Clonality	Polyclonal
Calculated MW	35432

Anti-CRSP8 Antibody - Additional Information**Gene ID** 9442**Other Names**

CRSP34; CRSP8; Mediator of RNA polymerase II transcription subunit 27; Cofactor required for Sp1 transcriptional activation subunit 8; CRSP complex subunit 8; Mediator complex subunit 27; P37 TRAP/SMCC/PC2 subunit; Transcriptional coactivator CRSP34

Target/Specificity

Recognizes endogenous levels of CRSP8 protein.

Dilution

WB~~WB (1/500 - 1/1000)

Format

Liquid in 0.42% Potassium phosphate, 0.87% Sodium chloride, pH 7.3, 30% glycerol, and 0.09% (W/V) sodium azide.

Storage

Store at -20 °C. Stable for 12 months from date of receipt

Anti-CRSP8 Antibody - Protein Information**Name** MED27**Synonyms** CRSP34 {ECO:0000312|EMBL:AAD12721.1}, CR**Function**

Component of the Mediator complex, a coactivator involved in the regulated transcription of nearly all RNA polymerase II-dependent genes. Mediator functions as a bridge to convey information from gene-specific regulatory proteins to the basal RNA polymerase II transcription machinery. Mediator is recruited to promoters by direct interactions with regulatory proteins and serves as a scaffold for the assembly of a functional preinitiation complex with RNA polymerase II and the

general transcription factors.

Cellular Location

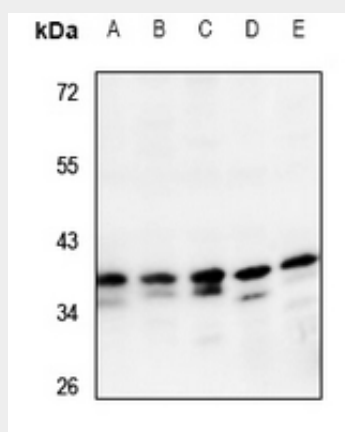
Nucleus

Anti-CRSP8 Antibody - Protocols

Provided below are standard protocols that you may find useful for product applications.

- [Western Blot](#)
- [Blocking Peptides](#)
- [Dot Blot](#)
- [Immunohistochemistry](#)
- [Immunofluorescence](#)
- [Immunoprecipitation](#)
- [Flow Cytometry](#)
- [Cell Culture](#)

Anti-CRSP8 Antibody - Images



Western blot analysis of CRSP8 expression in Hela (A), HCT116 (B), A549 (C), PC12 (D), AML12 (E) whole cell lysates.

Anti-CRSP8 Antibody - Background

KLH-conjugated synthetic peptide encompassing a sequence within the center region of human CRSP8. The exact sequence is proprietary.