

Anti-Musculin Antibody
Rabbit polyclonal antibody to Musculin
Catalog # AP60596**Specification**

Anti-Musculin Antibody - Product Information

Application	WB, IH
Primary Accession	O60682
Reactivity	Human, Mouse, Monkey, Pig, Chicken, Bovine
Host	Rabbit
Clonality	Polyclonal
Calculated MW	22068

Anti-Musculin Antibody - Additional Information**Gene ID** 9242**Other Names**

ABF1; BHLHA22; Musculin; Activated B-cell factor 1; ABF-1; Class A basic helix-loop-helix protein 22; bHLHa22

Target/Specificity

Recognizes endogenous levels of Musculin protein.

Dilution

WB~~WB (1/500 - 1/1000), IH (1/100 - 1/200)

IH~~WB (1/500 - 1/1000), IH (1/100 - 1/200)

Format

Liquid in 0.42% Potassium phosphate, 0.87% Sodium chloride, pH 7.3, 30% glycerol, and 0.09% (W/V) sodium azide.

Storage

Store at -20 °C. Stable for 12 months from date of receipt

Anti-Musculin Antibody - Protein Information**Name** MSC**Synonyms** ABF1, BHLHA22**Function**

Transcription repressor capable of inhibiting the transactivation capability of TCF3/E47. May play a role in regulating antigen-dependent B-cell differentiation.

Cellular Location

Nucleus.

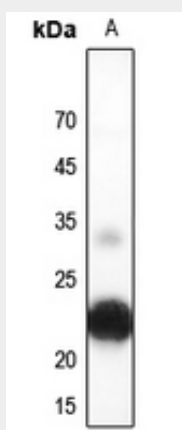
Tissue Location

Expressed in lymphoid tissues, B-cell lines and activated B-cells

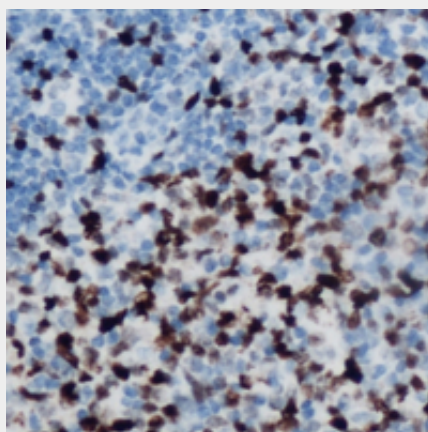
Anti-Musculin Antibody - Protocols

Provided below are standard protocols that you may find useful for product applications.

- [Western Blot](#)
- [Blocking Peptides](#)
- [Dot Blot](#)
- [Immunohistochemistry](#)
- [Immunofluorescence](#)
- [Immunoprecipitation](#)
- [Flow Cytometry](#)
- [Cell Culture](#)

Anti-Musculin Antibody - Images

Western blot analysis of Musculin expression in mouse brain (A) whole cell lysates.



Immunohistochemical analysis of Musculin staining in human lymphoma formalin fixed paraffin embedded tissue section. The section was pre-treated using heat mediated antigen retrieval with sodium citrate buffer (pH 6.0). The section was then incubated with the antibody at room temperature and detected using an HRP conjugated compact polymer system. DAB was used as the chromogen. The section was then counterstained with haematoxylin and mounted with DPX.

Anti-Musculin Antibody - Background

KLH-conjugated synthetic peptide encompassing a sequence within the C-term region of human Musculin. The exact sequence is proprietary.