

**Anti-P2Y4 Antibody**  
**Rabbit polyclonal antibody to P2Y4**  
**Catalog # AP60603****Specification**

---

**Anti-P2Y4 Antibody - Product Information**

Application	WB, IF/IC
Primary Accession	<a href="#">P51582</a>
Other Accession	<a href="#">Q9JJS7</a>
Reactivity	Human, Mouse, Rat
Host	Rabbit
Clonality	Polyclonal
Calculated MW	40963

**Anti-P2Y4 Antibody - Additional Information****Gene ID** 5030**Other Names**

NRU; P2Y purinoceptor 4; P2Y4; P2P; Uridine nucleotide receptor; UNR

**Target/Specificity**

Recognizes endogenous levels of P2Y4 protein.

**Dilution**

WB~~WB (1/500 - 1/1000), IF/IC (1/100 - 1/500)

IF/IC~~N/A

**Format**

Liquid in 0.42% Potassium phosphate, 0.87% Sodium chloride, pH 7.3, 30% glycerol, and 0.09% (W/V) sodium azide.

**Storage**

Store at -20 °C. Stable for 12 months from date of receipt

**Anti-P2Y4 Antibody - Protein Information****Name** P2RY4**Synonyms** NRU**Function**

Receptor for UTP and UDP coupled to G-proteins that activate a phosphatidylinositol-calcium second messenger system. Not activated by ATP or ADP.

**Cellular Location**

Cell membrane; Multi-pass membrane protein.

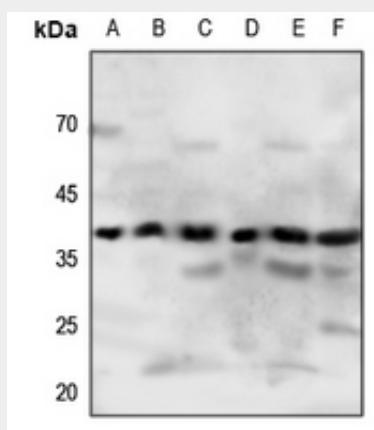
**Tissue Location**

Pancreas.

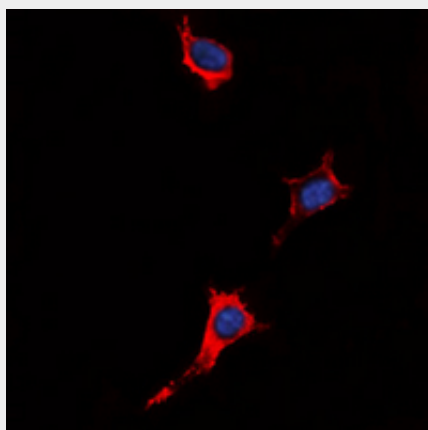
**Anti-P2Y4 Antibody - Protocols**

Provided below are standard protocols that you may find useful for product applications.

- [Western Blot](#)
- [Blocking Peptides](#)
- [Dot Blot](#)
- [Immunohistochemistry](#)
- [Immunofluorescence](#)
- [Immunoprecipitation](#)
- [Flow Cytometry](#)
- [Cell Culture](#)

**Anti-P2Y4 Antibody - Images**

Western blot analysis of P2Y4 expression in HeLa (A), H460 (B), mouse lung (C), mouse brain (D), mouse kidney (E), rat kidney (F) whole cell lysates.



Immunofluorescent analysis of P2Y4 staining in HeLa cells. Formalin-fixed cells were permeabilized with 0.1% Triton X-100 in TBS for 5-10 minutes and blocked with 3% BSA-PBS for 30 minutes at room temperature. Cells were probed with the primary antibody in 3% BSA-PBS and incubated overnight at 4 °C in a humidified chamber. Cells were washed with PBST and incubated with a DyLight 594-conjugated secondary antibody (red) in PBS at room temperature in the dark.

DAPI was used to stain the cell nuclei (blue).

**Anti-P2Y4 Antibody - Background**

KLH-conjugated synthetic peptide encompassing a sequence within the center region of human P2Y4. The exact sequence is proprietary.