

Anti-MYPT1 (pT853) Antibody
Rabbit polyclonal antibody to MYPT1 (pT853)
Catalog # AP60611**Specification**

Anti-MYPT1 (pT853) Antibody - Product Information

Application	WB, IHC
Primary Accession	O14974
Other Accession	Q9DBR7
Reactivity	Human, Mouse, Rat, Zebrafish, Chicken
Host	Rabbit
Clonality	Polyclonal
Calculated MW	115281

Anti-MYPT1 (pT853) Antibody - Additional Information**Gene ID** 4659**Other Names**

MBS; MYPT1; Protein phosphatase 1 regulatory subunit 12A; Myosin phosphatase-targeting subunit 1; Myosin phosphatase target subunit 1; Protein phosphatase myosin-binding subunit

Target/Specificity

Recognizes endogenous levels of MYPT1 (pT853) protein.

Dilution

WB~~WB (1/500 - 1/1000), IH (1/100 - 1/200)

IHC~~1:100~500

Format

Liquid in 0.42% Potassium phosphate, 0.87% Sodium chloride, pH 7.3, 30% glycerol, and 0.09% (W/V) sodium azide.

Storage

Store at -20 °C. Stable for 12 months from date of receipt

Anti-MYPT1 (pT853) Antibody - Protein Information**Name** PPP1R12A ([HGNC:7618](#))**Function**

Key regulator of protein phosphatase 1C (PPP1C). Mediates binding to myosin. As part of the PPP1C complex, involved in dephosphorylation of PLK1. Capable of inhibiting HIF1AN-dependent suppression of HIF1A activity.

Cellular Location

Cytoplasm. Cytoplasm, cytoskeleton, stress fiber. Note=Also along actomyosin filaments

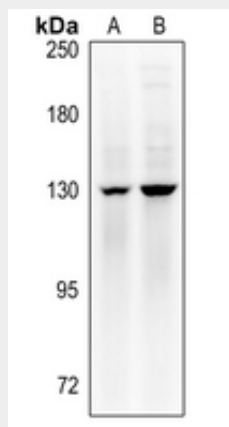
Tissue Location

Expressed in striated muscles, specifically in type 2a fibers (at protein level).

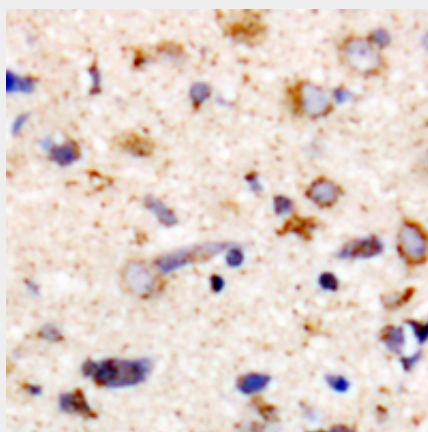
Anti-MYPT1 (pT853) Antibody - Protocols

Provided below are standard protocols that you may find useful for product applications.

- [Western Blot](#)
- [Blocking Peptides](#)
- [Dot Blot](#)
- [Immunohistochemistry](#)
- [Immunofluorescence](#)
- [Immunoprecipitation](#)
- [Flow Cytometry](#)
- [Cell Culture](#)

Anti-MYPT1 (pT853) Antibody - Images

Western blot analysis of MYPT1 (pT853) expression in C6 (A), MCF7 (B) whole cell lysates.



Immunohistochemical analysis of MYPT1 (pT853) staining in human brain formalin fixed paraffin embedded tissue section. The section was pre-treated using heat mediated antigen retrieval with sodium citrate buffer (pH 6.0). The section was then incubated with the antibody at room temperature and detected using an HRP conjugated compact polymer system. DAB was used as the chromogen. The section was then counterstained with haematoxylin and mounted with DPX.

Anti-MYPT1 (pT853) Antibody - Background

KLH-conjugated synthetic peptide encompassing a sequence within the center region of human MYPT1. The exact sequence is proprietary.