

Anti-SKIL Antibody
Rabbit polyclonal antibody to SKIL
Catalog # AP60632

Specification

Anti-SKIL Antibody - Product Information

Application	WB, IHC
Primary Accession	P12757
Other Accession	Q60665
Reactivity	Human, Mouse, Rat, Pig, Chicken, Bovine, Dog
Host	Rabbit
Clonality	Polyclonal
Calculated MW	76976

Anti-SKIL Antibody - Additional Information

Gene ID 6498

Other Names

SNO; Ski-like protein; Ski-related oncogene; Ski-related protein

Target/Specificity

Recognizes endogenous levels of SKIL protein.

Dilution

WB~~WB (1/500 - 1/1000), IH (1/100 - 1/200)

IHC~~1:100~500

Format

Liquid in 0.42% Potassium phosphate, 0.87% Sodium chloride, pH 7.3, 30% glycerol, and 0.09% (W/V) sodium azide.

Storage

Store at -20 °C. Stable for 12 months from date of receipt

Anti-SKIL Antibody - Protein Information

Name SKIL

Synonyms SNO

Function

May have regulatory role in cell division or differentiation in response to extracellular signals.

Tissue Location

Isoform SNON and isoform SNOA are widely expressed. Highest expression is found in skeletal muscle, followed by placenta and lung. Lowest expression in heart, brain and pancreas. Isoform

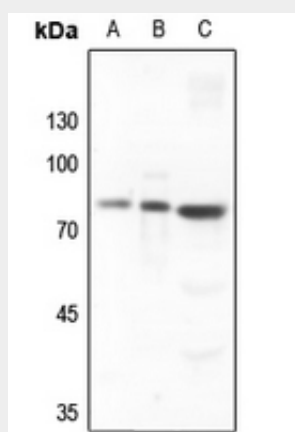
SNOI expression is restricted to skeletal muscle

Anti-SKIL Antibody - Protocols

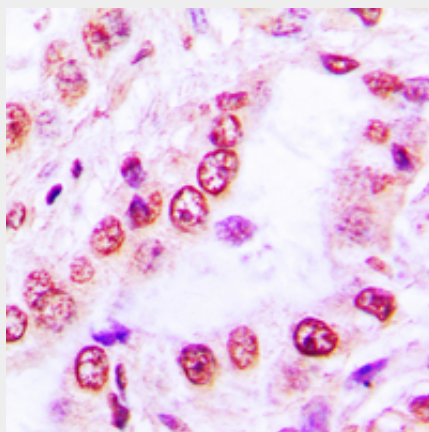
Provided below are standard protocols that you may find useful for product applications.

- [Western Blot](#)
- [Blocking Peptides](#)
- [Dot Blot](#)
- [Immunohistochemistry](#)
- [Immunofluorescence](#)
- [Immunoprecipitation](#)
- [Flow Cytometry](#)
- [Cell Culture](#)

Anti-SKIL Antibody - Images



Western blot analysis of SKIL expression in HEK293T (A), H446 (B), rat liver (C) whole cell lysates.



Immunohistochemical analysis of SKIL staining in human lung formalin fixed paraffin embedded tissue section. The section was pre-treated using heat mediated antigen retrieval with sodium citrate buffer (pH 6.0). The section was then incubated with the antibody at room temperature and detected using an HRP conjugated compact polymer system. DAB was used as the chromogen. The section was then counterstained with haematoxylin and mounted with DPX.

Anti-SKIL Antibody - Background

KLH-conjugated synthetic peptide encompassing a sequence within the C-term region of human SKIL. The exact sequence is proprietary.