

**Anti-TNFAIP8L2 Antibody**  
**Rabbit polyclonal antibody to TNFAIP8L2**  
**Catalog # AP60643****Specification**

---

**Anti-TNFAIP8L2 Antibody - Product Information**

Application	WB
Primary Accession	<a href="#">Q6P589</a>
Other Accession	<a href="#">Q9D8Y7</a>
Reactivity	Human, Mouse, Rat, Rabbit, Pig
Host	Rabbit
Clonality	Polyclonal
Calculated MW	20556

**Anti-TNFAIP8L2 Antibody - Additional Information****Gene ID** 79626**Other Names**

Tumor necrosis factor alpha-induced protein 8-like protein 2; TIPE2; TNF alpha-induced protein 8-like protein 2; TNFAIP8-like protein 2; Inflammation factor protein 20

**Target/Specificity**

Recognizes endogenous levels of TNFAIP8L2 protein.

**Dilution**

WB~~WB (1/500 - 1/1000)

**Format**

Liquid in 0.42% Potassium phosphate, 0.87% Sodium chloride, pH 7.3, 30% glycerol, and 0.09% (W/V) sodium azide.

**Storage**

Store at -20 °C. Stable for 12 months from date of receipt

**Anti-TNFAIP8L2 Antibody - Protein Information****Name** TNFAIP8L2**Function**

Acts as a negative regulator of innate and adaptive immunity by maintaining immune homeostasis (PubMed: [27043859](http://www.uniprot.org/citations/27043859)). Plays a regulatory role in the Toll-like signaling pathway by determining the strength of LPS-induced signaling and gene expression (PubMed: [32188758](http://www.uniprot.org/citations/32188758)). Inhibits TCR-mediated T-cell activation and negatively regulate T-cell function to prevent hyperresponsiveness (By similarity). Also inhibits autolysosome formation via negatively modulating MTOR activation by interacting with RAC1 and promoting the disassociation of the

RAC1-MTOR complex (PubMed:<a href="http://www.uniprot.org/citations/32460619" target="\_blank">32460619</a>). Plays an essential role in NK-cell biology by acting as a checkpoint and displaying an expression pattern correlating with NK-cell maturation process and by negatively regulating NK-cell maturation and antitumor immunity (By similarity). Mechanistically, suppresses IL-15-triggered mTOR activity in NK-cells (By similarity).

**Cellular Location**

Cytoplasm. Nucleus. Lysosome

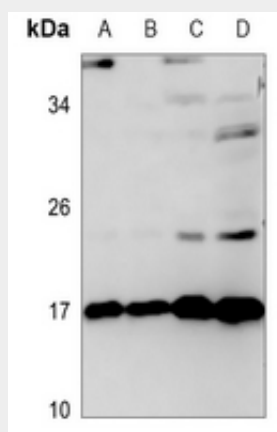
**Tissue Location**

Expressed in T-cells, B-cells, macrophages, neurons in the brain and brainstem, and stratified squamous epithelia of the esophagus, cervix and skin.

**Anti-TNFAIP8L2 Antibody - Protocols**

Provided below are standard protocols that you may find useful for product applications.

- [Western Blot](#)
- [Blocking Peptides](#)
- [Dot Blot](#)
- [Immunohistochemistry](#)
- [Immunofluorescence](#)
- [Immunoprecipitation](#)
- [Flow Cytometry](#)
- [Cell Culture](#)

**Anti-TNFAIP8L2 Antibody - Images**

Western blot analysis of TNFAIP8L2 expression in mouse liver (A), mouse kidney (B), rat liver (C), rat kidney (D) whole cell lysates.

**Anti-TNFAIP8L2 Antibody - Background**

KLH-conjugated synthetic peptide encompassing a sequence within the center region of human TNFAIP8L2. The exact sequence is proprietary.