

Anti-TRAPPC3 Antibody
Rabbit polyclonal antibody to TRAPPC3
Catalog # AP60647

Specification

Anti-TRAPPC3 Antibody - Product Information

Application	WB, IHC
Primary Accession	O43617
Other Accession	O55013
Reactivity	Human, Mouse, Rat
Host	Rabbit
Clonality	Polyclonal
Calculated MW	20274

Anti-TRAPPC3 Antibody - Additional Information

Gene ID 27095

Other Names

BET3; Trafficking protein particle complex subunit 3; BET3 homolog

Target/Specificity

KLH-conjugated synthetic peptide encompassing a sequence within the C-term region of human TRAPPC3. The exact sequence is proprietary.

Dilution

WB~~WB (1/500 - 1/1000), IH (1/100 - 1/200)
IHC~~1:100~500

Format

Liquid in 0.42% Potassium phosphate, 0.87% Sodium chloride, pH 7.3, 30% glycerol, and 0.09% (W/V) sodium azide.

Storage

Store at -20 °C. Stable for 12 months from date of receipt

Anti-TRAPPC3 Antibody - Protein Information

Name TRAPPC3 {ECO:0000303|PubMed:19416478, ECO:0000312|HGNC:HGNC:19942}

Function

May play a role in vesicular transport from endoplasmic reticulum to Golgi.

Cellular Location

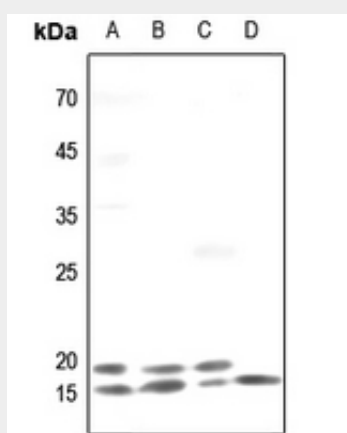
Golgi apparatus, cis-Golgi network. Endoplasmic reticulum

Anti-TRAPPC3 Antibody - Protocols

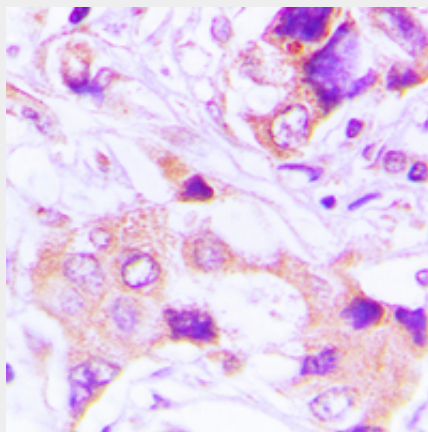
Provided below are standard protocols that you may find useful for product applications.

- [Western Blot](#)
- [Blocking Peptides](#)
- [Dot Blot](#)
- [Immunohistochemistry](#)
- [Immunofluorescence](#)
- [Immunoprecipitation](#)
- [Flow Cytometry](#)
- [Cell Culture](#)

Anti-TRAPPC3 Antibody - Images



Western blot analysis of TRAPPC3 expression in HEK293T (A), mouse liver (B), rat lung (C), rat liver (D) whole cell lysates.



Immunohistochemical analysis of TRAPPC3 staining in human lung cancer formalin fixed paraffin embedded tissue section. The section was pre-treated using heat mediated antigen retrieval with sodium citrate buffer (pH 6.0). The section was then incubated with the antibody at room temperature and detected using an HRP conjugated compact polymer system. DAB was used as the chromogen. The section was then counterstained with haematoxylin and mounted with DPX.

Anti-TRAPPC3 Antibody - Background

KLH-conjugated synthetic peptide encompassing a sequence within the C-term region of human TRAPPC3. The exact sequence is proprietary.