

**Anti-NIPA (pS354) Antibody**  
**Rabbit polyclonal antibody to NIPA (pS354)**  
**Catalog # AP60652****Specification**

---

**Anti-NIPA (pS354) Antibody - Product Information**

Application	WB, IF/IC, IHC
Primary Accession	<a href="#">Q86WB0</a>
Other Accession	<a href="#">Q80YV2</a>
Reactivity	Human, Mouse, Rat, Monkey
Host	Rabbit
Clonality	Polyclonal
Calculated MW	55262

**Anti-NIPA (pS354) Antibody - Additional Information****Gene ID** 51530**Other Names**

NIPA; Nuclear-interacting partner of ALK; Nuclear-interacting partner of anaplastic lymphoma kinase; hNIPA; Zinc finger C3HC-type protein 1

**Target/Specificity**

Recognizes endogenous levels of NIPA (pS354) protein.

**Dilution**

WB~~WB (1/500 - 1/1000), IH (1/100 - 1/200), IF/IC (1/100 - 1/500)

IF/IC~~N/A

IHC~~1:100~500

**Format**

Liquid in 0.42% Potassium phosphate, 0.87% Sodium chloride, pH 7.3, 30% glycerol, and 0.09% (W/V) sodium azide.

**Storage**

Store at -20 °C. Stable for 12 months from date of receipt

**Anti-NIPA (pS354) Antibody - Protein Information****Name** ZC3HC1 ([HGNC:29913](#))**Function**

Required for proper positioning of a substantial amount of TPR at the nuclear basket (NB) through interaction with TPR.

**Cellular Location**

Nucleus. Nucleus envelope. Note=Resident of the nuclear basket (NB) (PubMed:34440706). Occurs at the nuclear envelopes (NE) of all TPR-containing cell types, including proliferating and non-

dividing, terminally differentiated cells of different morphogenetic origin (PubMed:34440706).

#### Tissue Location

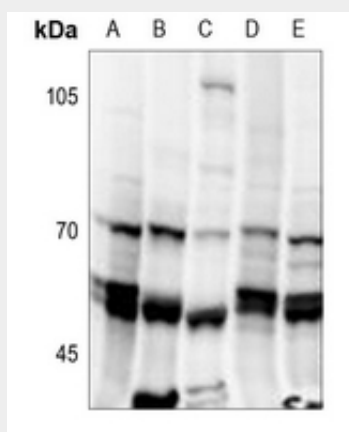
Widely expressed. Highly expressed in heart, skeletal muscle and testis. Expressed in brain, placenta, lung, kidney, liver, pancreas, spleen, thymus, prostate, ovary small intestine and colon. Weakly or not expressed in leukocytes

#### Anti-NIPA (pS354) Antibody - Protocols

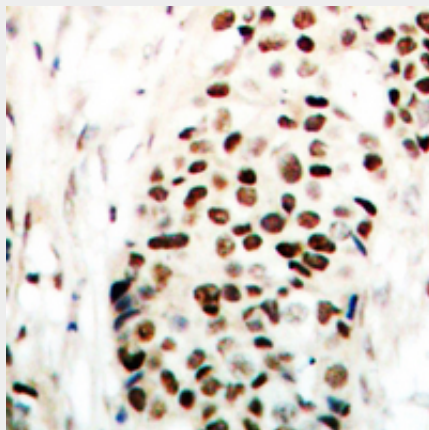
Provided below are standard protocols that you may find useful for product applications.

- [Western Blot](#)
- [Blocking Peptides](#)
- [Dot Blot](#)
- [Immunohistochemistry](#)
- [Immunofluorescence](#)
- [Immunoprecipitation](#)
- [Flow Cytometry](#)
- [Cell Culture](#)

#### Anti-NIPA (pS354) Antibody - Images

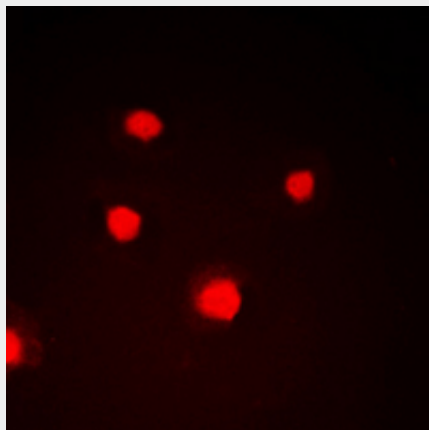


Western blot analysis of NIPA (pS354) expression in PC12 (A), BV2 (B), U87MG (C), PC3 (D), HeLa (E) whole cell lysates.



Immunohistochemical analysis of NIPA (pS354) staining in human breast cancer formalin fixed

paraffin embedded tissue section. The section was pre-treated using heat mediated antigen retrieval with sodium citrate buffer (pH 6.0). The section was then incubated with the antibody at room temperature and detected using an HRP conjugated compact polymer system. DAB was used as the chromogen. The section was then counterstained with haematoxylin and mounted with DPX.



Immunofluorescent analysis of NIPA (pS354) staining in HepG2 cells. Formalin-fixed cells were permeabilized with 0.1% Triton X-100 in TBS for 5-10 minutes and blocked with 3% BSA-PBS for 30 minutes at room temperature. Cells were probed with the primary antibody in 3% BSA-PBS and incubated overnight at 4 °C in a humidified chamber. Cells were washed with PBST and incubated with a DyLight 594-conjugated secondary antibody (red) in PBS at room temperature in the dark.

#### **Anti-NIPA (pS354) Antibody - Background**

KLH-conjugated synthetic peptide encompassing a sequence within the center region of human NIPA. The exact sequence is proprietary.