

Anti-ARHGEF7 Antibody
Rabbit polyclonal antibody to ARHGEF7
Catalog # AP60657**Specification**

Anti-ARHGEF7 Antibody - Product Information

Application	WB, IHC
Primary Accession	Q14155
Other Accession	Q9ES28
Reactivity	Human, Mouse, Rat
Host	Rabbit
Clonality	Polyclonal
Calculated MW	90012

Anti-ARHGEF7 Antibody - Additional Information**Gene ID** 8874**Other Names**

COOL1; KIAA0142; P85SPR; PAK3BP; PIXB; Rho guanine nucleotide exchange factor 7; Beta-Pix; COOL-1; PAK-interacting exchange factor beta; p85

Target/Specificity

KLH-conjugated synthetic peptide encompassing a sequence within the center region of human ARHGEF7. The exact sequence is proprietary.

Dilution

WB~~WB (1/500 - 1/1000), IH (1/100 - 1/200)

IHC~~1:100~500

Format

Liquid in 0.42% Potassium phosphate, 0.87% Sodium chloride, pH 7.3, 30% glycerol, and 0.09% (W/V) sodium azide.

Storage

Store at -20 °C. Stable for 12 months from date of receipt

Anti-ARHGEF7 Antibody - Protein Information**Name** ARHGEF7**Synonyms** COOL1, KIAA0142, P85SPR, PAK3BP, PIXB**Function**

Acts as a RAC1 guanine nucleotide exchange factor (GEF) and can induce membrane ruffling. Functions in cell migration, attachment and cell spreading. Promotes targeting of RAC1 to focal adhesions (By similarity). May function as a positive regulator of apoptosis. Downstream of NMDA receptors and CaMKK-CaMK1 signaling cascade, promotes the formation of spines and synapses in

hippocampal neurons.

Cellular Location

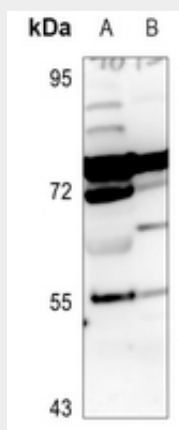
Cell junction, focal adhesion. Cell projection, ruffle. Cytoplasm, cell cortex Cell projection, lamellipodium. Note=Detected at cell adhesions. A small proportion is detected at focal adhesions

Anti-ARHGEF7 Antibody - Protocols

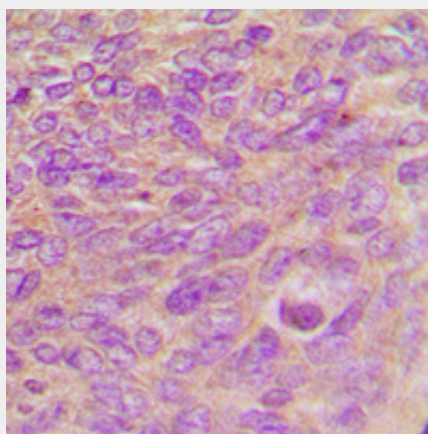
Provided below are standard protocols that you may find useful for product applications.

- [Western Blot](#)
- [Blocking Peptides](#)
- [Dot Blot](#)
- [Immunohistochemistry](#)
- [Immunofluorescence](#)
- [Immunoprecipitation](#)
- [Flow Cytometry](#)
- [Cell Culture](#)

Anti-ARHGEF7 Antibody - Images



Western blot analysis of ARHGEF7 expression in rat kidney (A), rat testis (B) whole cell lysates.



Immunohistochemical analysis of ARHGEF7 staining in human breast cancer formalin fixed paraffin embedded tissue section. The section was pre-treated using heat mediated antigen retrieval with sodium citrate buffer (pH 6.0). The section was then incubated with the antibody at

room temperature and detected using an HRP conjugated compact polymer system. DAB was used as the chromogen. The section was then counterstained with haematoxylin and mounted with DPX.

Anti-ARHGEF7 Antibody - Background

KLH-conjugated synthetic peptide encompassing a sequence within the center region of human ARHGEF7. The exact sequence is proprietary.