

**Anti-ELF1 Antibody**  
**Rabbit polyclonal antibody to ELF1**  
**Catalog # AP60666****Specification**

---

**Anti-ELF1 Antibody - Product Information**

Application	WB, IF/IC, IHC
Primary Accession	<a href="#">P32519</a>
Other Accession	<a href="#">Q60775</a>
Reactivity	Human, Mouse
Host	Rabbit
Clonality	Polyclonal
Calculated MW	67498

**Anti-ELF1 Antibody - Additional Information****Gene ID** 1997**Other Names**

ETS-related transcription factor Elf-1; E74-like factor 1

**Target/Specificity**

KLH-conjugated synthetic peptide encompassing a sequence within the C-term region of human ELF1. The exact sequence is proprietary.

**Dilution**

WB~~WB (1/500 - 1/1000), IH (1/100 - 1/200), IF/IC (1/100 - 1/500)

IF/IC~~N/A

IHC~~1:100~500

**Format**

Liquid in 0.42% Potassium phosphate, 0.87% Sodium chloride, pH 7.3, 30% glycerol, and 0.09% (W/V) sodium azide.

**Storage**

Store at -20 °C. Stable for 12 months from date of receipt

**Anti-ELF1 Antibody - Protein Information****Name** ELF1**Function**

Transcription factor that activates the LYN and BLK promoters. Appears to be required for the T-cell-receptor-mediated trans activation of HIV-2 gene expression. Binds specifically to two purine-rich motifs in the HIV-2 enhancer.

**Cellular Location**

Nucleus.

### Tissue Location

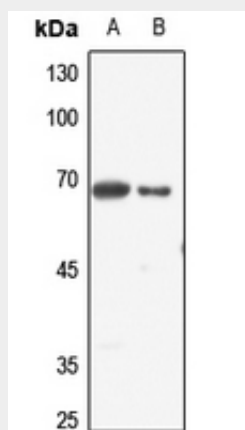
In fetal tissues, it is highly expressed in heart, lung liver and kidney, and weakly expressed in brain. In adult, it is highly expressed in pancreas, spleen, thymus and peripheral blood leukocytes, expressed at moderate levels in heart, placenta, lung, liver, skeletal muscle, kidney, prostate, ovary, small intestine and colon, and weakly expressed in brain and testis

### Anti-ELF1 Antibody - Protocols

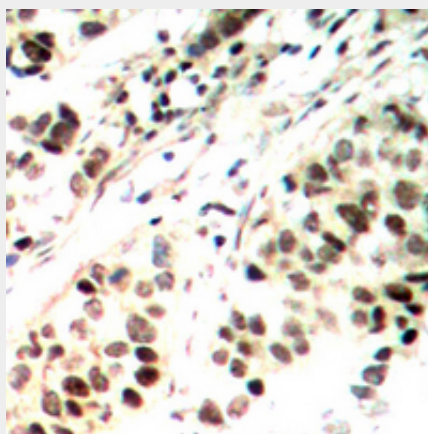
Provided below are standard protocols that you may find useful for product applications.

- [Western Blot](#)
- [Blocking Peptides](#)
- [Dot Blot](#)
- [Immunohistochemistry](#)
- [Immunofluorescence](#)
- [Immunoprecipitation](#)
- [Flow Cytometry](#)
- [Cell Culture](#)

### Anti-ELF1 Antibody - Images

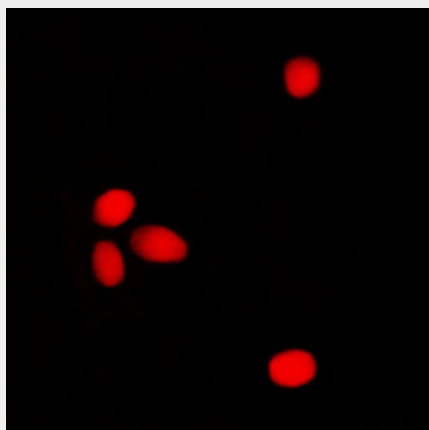


Western blot analysis of ELF1 expression in HEK293T (A), HGC27 (B) whole cell lysates.



Immunohistochemical analysis of ELF1 staining in human ovarian cancer formalin fixed paraffin embedded tissue section. The section was pre-treated using heat mediated antigen retrieval with sodium citrate buffer (pH 6.0). The section was then incubated with the antibody at room

temperature and detected using an HRP conjugated compact polymer system. DAB was used as the chromogen. The section was then counterstained with haematoxylin and mounted with DPX.



Immunofluorescent analysis of ELF1 staining in K562 cells. Formalin-fixed cells were permeabilized with 0.1% Triton X-100 in TBS for 5-10 minutes and blocked with 3% BSA-PBS for 30 minutes at room temperature. Cells were probed with the primary antibody in 3% BSA-PBS and incubated overnight at 4 °C in a humidified chamber. Cells were washed with PBST and incubated with a DyLight 594-conjugated secondary antibody (red) in PBS at room temperature in the dark.

#### **Anti-ELF1 Antibody - Background**

KLH-conjugated synthetic peptide encompassing a sequence within the C-term region of human ELF1. The exact sequence is proprietary.