

Anti-IL-6 Antibody
Rabbit polyclonal antibody to IL-6
Catalog # AP60675**Specification**

Anti-IL-6 Antibody - Product Information

Application	WB, IHC
Primary Accession	P05231
Other Accession	P08505
Reactivity	Human, Mouse, Monkey
Host	Rabbit
Clonality	Polyclonal
Calculated MW	23718

Anti-IL-6 Antibody - Additional Information**Gene ID** 3569**Other Names**

IFNB2; Interleukin-6; IL-6; B-cell stimulatory factor 2; BSF-2; CTL differentiation factor; CDF; Hybridoma growth factor; Interferon beta-2; IFN-beta-2

Target/Specificity

Recognizes endogenous levels of IL-6 protein.

DilutionWB~~WB (1/500 - 1/1000), IH (1/50 - 1/200)
IHC~~1:100~500**Format**

Liquid in 0.42% Potassium phosphate, 0.87% Sodium chloride, pH 7.3, 30% glycerol, and 0.09% (W/V) sodium azide.

Storage

Store at -20 °C. Stable for 12 months from date of receipt

Anti-IL-6 Antibody - Protein Information**Name** IL6 ([HGNC:6018](#))**Synonyms** IFNB2**Function**

Cytokine with a wide variety of biological functions in immunity, tissue regeneration, and metabolism. Binds to IL6R, then the complex associates to the signaling subunit IL6ST/gp130 to trigger the intracellular IL6-signaling pathway (Probable). The interaction with the membrane-bound IL6R and IL6ST stimulates 'classic signaling', whereas the binding of IL6 and soluble IL6R to IL6ST stimulates 'trans- signaling'. Alternatively, 'cluster signaling' occurs when

membrane- bound IL6:IL6R complexes on transmitter cells activate IL6ST receptors on neighboring receiver cells (Probable).

Cellular Location

Secreted.

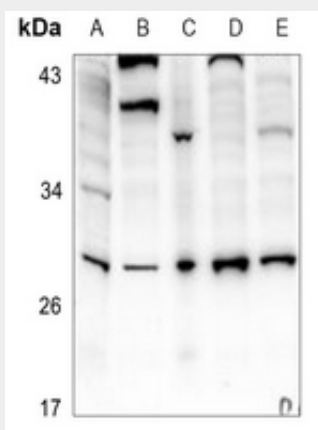
Tissue Location

Produced by skeletal muscle.

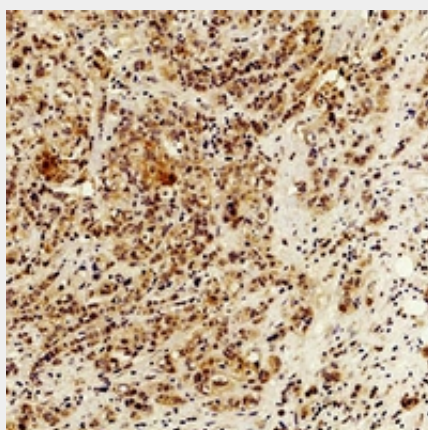
Anti-IL-6 Antibody - Protocols

Provided below are standard protocols that you may find useful for product applications.

- [Western Blot](#)
- [Blocking Peptides](#)
- [Dot Blot](#)
- [Immunohistochemistry](#)
- [Immunofluorescence](#)
- [Immunoprecipitation](#)
- [Flow Cytometry](#)
- [Cell Culture](#)

Anti-IL-6 Antibody - Images

Western blot analysis of IL-6 expression in Hela (A), U87MG (B), HuT78 (C), A549 (D), MCF7 (E) whole cell lysates.



Immunohistochemical analysis of IL-6 staining in human breast cancer formalin fixed paraffin embedded tissue section. The section was pre-treated using heat mediated antigen retrieval with sodium citrate buffer (pH 6.0). The section was then incubated with the antibody at room temperature and detected using an HRP conjugated compact polymer system. DAB was used as the chromogen. The section was then counterstained with haematoxylin and mounted with DPX.

Anti-IL-6 Antibody - Background

KLH-conjugated synthetic peptide encompassing a sequence within the center region of human IL-6. The exact sequence is proprietary.