

Anti-LASP1 Antibody
Rabbit polyclonal antibody to LASP1
Catalog # AP60680**Specification**

Anti-LASP1 Antibody - Product Information

Application	WB
Primary Accession	Q14847
Other Accession	Q61792
Reactivity	Human, Mouse, Rat, Pig, Bovine
Host	Rabbit
Clonality	Polyclonal
Calculated MW	29717

Anti-LASP1 Antibody - Additional Information**Gene ID** 3927**Other Names**

MLN50; LIM and SH3 domain protein 1; LASP-1; Metastatic lymph node gene 50 protein; MLN 50

Target/Specificity

KLH-conjugated synthetic peptide encompassing a sequence within the center region of human LASP1. The exact sequence is proprietary.

Dilution

WB~~WB (1/500 - 1/1000)

Format

Liquid in 0.42% Potassium phosphate, 0.87% Sodium chloride, pH 7.3, 30% glycerol, and 0.09% (W/V) sodium azide.

Storage

Store at -20 °C. Stable for 12 months from date of receipt

Anti-LASP1 Antibody - Protein Information**Name** LASP1**Synonyms** MLN50**Function**

Plays an important role in the regulation of dynamic actin- based, cytoskeletal activities. Agonist-dependent changes in LASP1 phosphorylation may also serve to regulate actin-associated ion transport activities, not only in the parietal cell but also in certain other F-actin-rich secretory epithelial cell types (By similarity).

Cellular Location

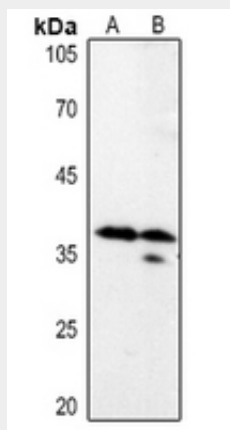
Cytoplasm, cell cortex. Cytoplasm, cytoskeleton. Note=Associated with the F-actin rich cortical cytoskeleton.

Anti-LASP1 Antibody - Protocols

Provided below are standard protocols that you may find useful for product applications.

- [Western Blot](#)
- [Blocking Peptides](#)
- [Dot Blot](#)
- [Immunohistochemistry](#)
- [Immunofluorescence](#)
- [Immunoprecipitation](#)
- [Flow Cytometry](#)
- [Cell Culture](#)

Anti-LASP1 Antibody - Images



Western blot analysis of LASP1 expression in rat spleen (A), rat lung (B) whole cell lysates.

Anti-LASP1 Antibody - Background

KLH-conjugated synthetic peptide encompassing a sequence within the center region of human LASP1. The exact sequence is proprietary.