

Anti-NT5C1A Antibody
Rabbit polyclonal antibody to NT5C1A
Catalog # AP60684**Specification**

Anti-NT5C1A Antibody - Product Information

Application	WB, IF/IC
Primary Accession	Q9BXI3
Other Accession	A3KFX0
Reactivity	Human, Mouse, Rat
Host	Rabbit
Clonality	Polyclonal
Calculated MW	41021

Anti-NT5C1A Antibody - Additional Information**Gene ID** 84618**Other Names**

Cytosolic 5'-nucleotidase 1A; cN1A; Cytosolic 5'-nucleotidase 1A; cN-I; cN-IA

Target/Specificity

Recognizes endogenous levels of NT5C1A protein.

Dilution

WB~~WB (1/500 - 1/1000), IF/IC (1/100 - 1/500)

IF/IC~~N/A

Format

Liquid in 0.42% Potassium phosphate, 0.87% Sodium chloride, pH 7.3, 30% glycerol, and 0.09% (W/V) sodium azide.

Storage

Store at -20 °C. Stable for 12 months from date of receipt

Anti-NT5C1A Antibody - Protein Information**Name** NT5C1A**Function**

Catalyzes the hydrolysis of ribonucleotide and deoxyribonucleotide monophosphates, releasing inorganic phosphate and the corresponding nucleoside (PubMed:11133996, PubMed:34814800, PubMed:7599155, PubMed:8967393). AMP is the major substrate but can also hydrolyze dCMP and IMP (PubMed:11133996, PubMed:11133996, PubMed:11133996).

href="http://www.uniprot.org/citations/34814800" target="_blank">34814800, PubMed:7599155, PubMed:8967393).

Cellular Location

Cytoplasm.

Tissue Location

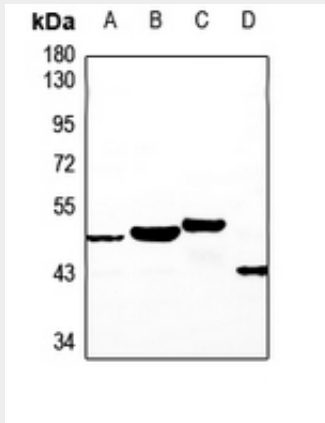
Highly expressed in skeletal muscle. Detected at intermediate levels in heart, brain, kidney and pancreas

Anti-NT5C1A Antibody - Protocols

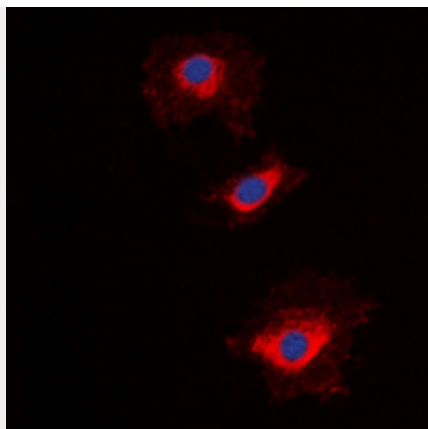
Provided below are standard protocols that you may find useful for product applications.

- [Western Blot](#)
- [Blocking Peptides](#)
- [Dot Blot](#)
- [Immunohistochemistry](#)
- [Immunofluorescence](#)
- [Immunoprecipitation](#)
- [Flow Cytometry](#)
- [Cell Culture](#)

Anti-NT5C1A Antibody - Images



Western blot analysis of NT5C1A expression in HCT116 (A), COS7 (B), mouse heart (C), PC12 (D) whole cell lysates.



Immunofluorescent analysis of NT5C1A staining in HepG2 cells. Formalin-fixed cells were permeabilized with 0.1% Triton X-100 in TBS for 5-10 minutes and blocked with 3% BSA-PBS for 30 minutes at room temperature. Cells were probed with the primary antibody in 3% BSA-PBS and incubated overnight at 4 °C in a humidified chamber. Cells were washed with PBST and incubated with a DyLight 594-conjugated secondary antibody (red) in PBS at room temperature in the dark. DAPI was used to stain the cell nuclei (blue).

Anti-NT5C1A Antibody - Background

KLH-conjugated synthetic peptide encompassing a sequence within the center region of human NT5C1A. The exact sequence is proprietary.