

Anti-CD137 Antibody
Rabbit polyclonal antibody to CD137
Catalog # AP60689**Specification**

Anti-CD137 Antibody - Product Information

Application	WB, IF
Primary Accession	O07011
Other Accession	P20334
Reactivity	Human, Mouse, Rat, Monkey
Host	Rabbit
Clonality	Polyclonal
Calculated MW	27899

Anti-CD137 Antibody - Additional Information**Gene ID** 3604**Other Names**

CD137; ILA; Tumor necrosis factor receptor superfamily member 9; 4-1BB ligand receptor; CDw137; T-cell antigen 4-1BB homolog; T-cell antigen ILA; CD137

Target/Specificity

Recognizes endogenous levels of CD137 protein.

DilutionWB~~WB (1/500 - 1/1000), IF/IC (1/100 - 1/500)
IF~~WB (1/500 - 1/1000), IF/IC (1/100 - 1/500)**Format**

Liquid in 0.42% Potassium phosphate, 0.87% Sodium chloride, pH 7.3, 30% glycerol, and 0.09% (W/V) sodium azide.

Storage

Store at -20 °C. Stable for 12 months from date of receipt

Anti-CD137 Antibody - Protein Information**Name** TNFRSF9**Synonyms** CD137, ILA**Function**

Receptor for TNFSF9/4-1BBL. Conveys a signal that enhances CD8(+) T-cell survival, cytotoxicity, and mitochondrial activity, thereby promoting immunity against viruses and tumors (Probable).

Cellular Location

Cell membrane; Single-pass type I membrane protein

Tissue Location

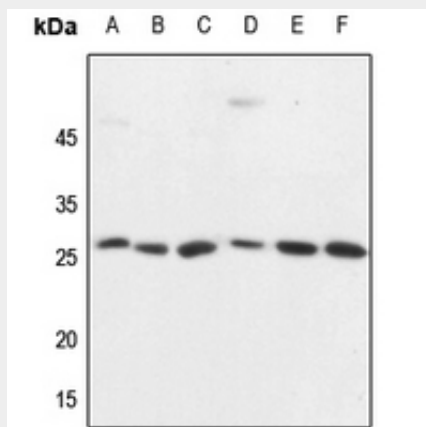
Expressed on the surface of activated T-cells.

Anti-CD137 Antibody - Protocols

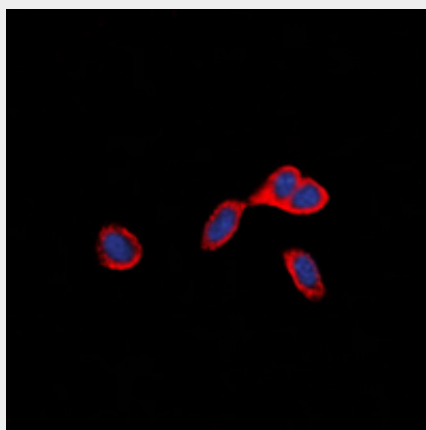
Provided below are standard protocols that you may find useful for product applications.

- [Western Blot](#)
- [Blocking Peptides](#)
- [Dot Blot](#)
- [Immunohistochemistry](#)
- [Immunofluorescence](#)
- [Immunoprecipitation](#)
- [Flow Cytometry](#)
- [Cell Culture](#)

Anti-CD137 Antibody - Images



Western blot analysis of CD137 expression in HEK293T (A), Hela (B), HepG2 (C), mouse brain (D), mouse spleen (E), rat spleen (F) whole cell lysates.



Immunofluorescent analysis of CD137 staining in HepG2 cells. Formalin-fixed cells were permeabilized with 0.1% Triton X-100 in TBS for 5-10 minutes and blocked with 3% BSA-PBS for 30 minutes at room temperature. Cells were probed with the primary antibody in 3% BSA-PBS and incubated overnight at 4 °C in a humidified chamber. Cells were washed with PBST and incubated with a DyLight 594-conjugated secondary antibody (red) in PBS at room temperature in the dark.

DAPI was used to stain the cell nuclei (blue).

Anti-CD137 Antibody - Background

KLH-conjugated synthetic peptide encompassing a sequence within the center region of human CD137. The exact sequence is proprietary.