

Anti-XRN2 Antibody
Rabbit polyclonal antibody to XRN2
Catalog # AP60693**Specification**

Anti-XRN2 Antibody - Product Information

Application	WB, IHC
Primary Accession	Q9H0D6
Other Accession	Q9DBR1
Reactivity	Human, Mouse, Zebrafish, Monkey, Chicken, Bovine
Host	Rabbit
Clonality	Polyclonal
Calculated MW	108582

Anti-XRN2 Antibody - Additional Information**Gene ID** 22803**Other Names**

5'-3' exoribonuclease 2; DHM1-like protein; DHP protein

Target/Specificity

Recognizes endogenous levels of XRN2 protein.

Dilution

WB~~WB (1/500 - 1/1000), IH (1/100 - 1/200)

IHC~~1:100~500

Format

Liquid in 0.42% Potassium phosphate, 0.87% Sodium chloride, pH 7.3, 30% glycerol, and 0.09% (W/V) sodium azide.

Storage

Store at -20 °C.Stable for 12 months from date of receipt

Anti-XRN2 Antibody - Protein Information**Name** XRN2**Function**

Possesses 5'->3' exoribonuclease activity (By similarity). May promote the termination of transcription by RNA polymerase II. During transcription termination, cleavage at the polyadenylation site liberates a 5' fragment which is subsequently processed to form the mature mRNA and a 3' fragment which remains attached to the elongating polymerase. The processive degradation of this 3' fragment by this protein may promote termination of transcription. Binds to RNA polymerase II (RNAP II) transcription termination R-loops formed by G- rich pause sites (PubMed:21700224).

Cellular Location

Nucleus, nucleolus.

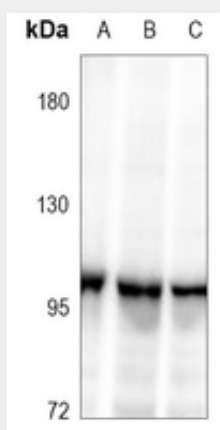
Tissue Location

Expressed in the spleen, thymus, prostate, testis, ovary, small intestine, colon, peripheral blood leukocytes, heart, brain, placenta, lung, liver, skeletal muscle, kidney, and pancreas Isoform 2 is expressed predominantly in peripheral blood leukocytes

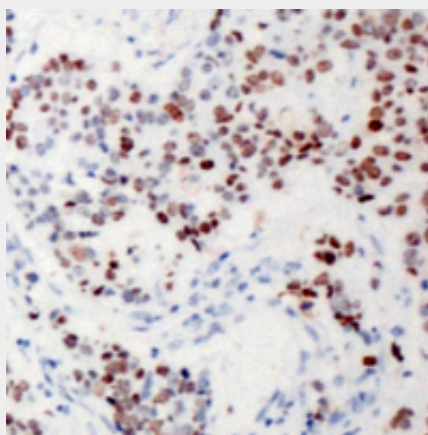
Anti-XRN2 Antibody - Protocols

Provided below are standard protocols that you may find useful for product applications.

- [Western Blot](#)
- [Blocking Peptides](#)
- [Dot Blot](#)
- [Immunohistochemistry](#)
- [Immunofluorescence](#)
- [Immunoprecipitation](#)
- [Flow Cytometry](#)
- [Cell Culture](#)

Anti-XRN2 Antibody - Images

Western blot analysis of XRN2 expression in SKOV3 (A), LO2 (B), A549 (C) whole cell lysates.



Immunohistochemical analysis of XRN2 staining in human breast cancer formalin fixed paraffin

embedded tissue section. The section was pre-treated using heat mediated antigen retrieval with sodium citrate buffer (pH 6.0). The section was then incubated with the antibody at room temperature and detected using an HRP conjugated compact polymer system. DAB was used as the chromogen. The section was then counterstained with haematoxylin and mounted with DPX.

Anti-XRN2 Antibody - Background

KLH-conjugated synthetic peptide encompassing a sequence within the N-term region of human XRN2. The exact sequence is proprietary.