

Anti-p47 phox (pS345) Antibody
Rabbit polyclonal antibody to p47 phox (pS345)
Catalog # AP60701

Specification

Anti-p47 phox (pS345) Antibody - Product Information

Application	WB, IH
Primary Accession	P14598
Other Accession	Q09014
Reactivity	Human, Mouse, Rat
Host	Rabbit
Clonality	Polyclonal
Calculated MW	44682

Anti-p47 phox (pS345) Antibody - Additional Information

Gene ID 653361

Other Names

NOXO2; SH3PXD1A; Neutrophil cytosol factor 1; NCF-1; 47 kDa autosomal chronic granulomatous disease protein; 47 kDa neutrophil oxidase factor; NCF-47K; Neutrophil NADPH oxidase factor 1; Nox organizer 2; Nox-organizing protein 2; SH3 and PX domain-containing protein 1A; p47-phox

Target/Specificity

Recognizes endogenous levels of p47 phox (pS345) protein.

Dilution

WB~~WB (1/500 - 1/1000), IH (1/100 - 1/200)

IH~~WB (1/500 - 1/1000), IH (1/100 - 1/200)

Format

Liquid in 0.42% Potassium phosphate, 0.87% Sodium chloride, pH 7.3, 30% glycerol, and 0.09% (W/V) sodium azide.

Storage

Store at -20 °C. Stable for 12 months from date of receipt

Anti-p47 phox (pS345) Antibody - Protein Information

Name NCF1

Synonyms NOXO2, SH3PXD1A

Function

NCF2, NCF1, and a membrane bound cytochrome b558 are required for activation of the latent NADPH oxidase (necessary for superoxide production).

Cellular Location

Cytoplasm, cytosol. Membrane; Peripheral membrane protein; Cytoplasmic side

Tissue Location

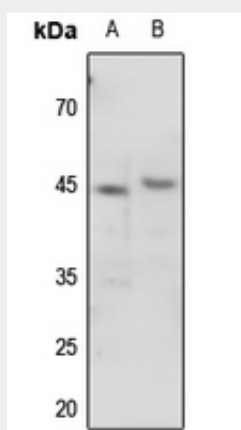
Detected in peripheral blood monocytes and neutrophils (at protein level).

Anti-p47 phox (pS345) Antibody - Protocols

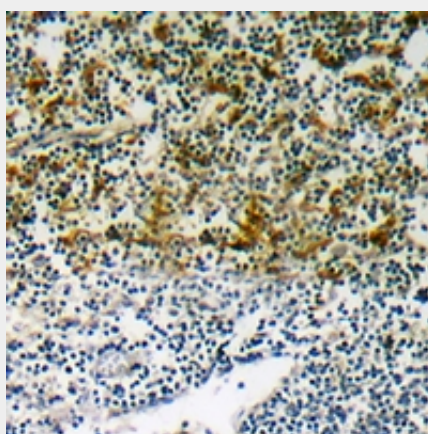
Provided below are standard protocols that you may find useful for product applications.

- [Western Blot](#)
- [Blocking Peptides](#)
- [Dot Blot](#)
- [Immunohistochemistry](#)
- [Immunofluorescence](#)
- [Immunoprecipitation](#)
- [Flow Cytometry](#)
- [Cell Culture](#)

Anti-p47 phox (pS345) Antibody - Images



Western blot analysis of p47 phox (pS345) expression in rat lung (A), rat liver (B) whole cell lysates.



Immunohistochemical analysis of p47 phox (pS345) staining in human lymph node formalin fixed paraffin embedded tissue section. The section was pre-treated using heat mediated antigen retrieval with sodium citrate buffer (pH 6.0). The section was then incubated with the antibody at

room temperature and detected using an HRP conjugated compact polymer system. DAB was used as the chromogen. The section was then counterstained with haematoxylin and mounted with DPX.

Anti-p47 phox (pS345) Antibody - Background

KLH-conjugated synthetic peptide encompassing a sequence within the C-term region of human p47 phox. The exact sequence is proprietary.