

Anti-MRPS22 Antibody
Rabbit polyclonal antibody to MRPS22
Catalog # AP60707**Specification**

Anti-MRPS22 Antibody - Product Information

Application	WB, IH, IF
Primary Accession	P82650
Other Accession	Q9CXW2
Reactivity	Human, Mouse, Rat, Monkey, Bovine
Host	Rabbit
Clonality	Polyclonal
Calculated MW	41280

Anti-MRPS22 Antibody - Additional Information**Gene ID** 56945**Other Names**

C3orf5; RPMS22; 28S ribosomal protein S22 mitochondrial; MRP-S22; S22mt

Target/Specificity

Recognizes endogenous levels of MRPS22 protein.

Dilution

WB~~WB (1/500 - 1/1000), IH (1/100 - 1/200), IF/IC (1/100 - 1/500)

IH~~WB (1/500 - 1/1000), IH (1/100 - 1/200), IF/IC (1/100 - 1/500)

IF~~WB (1/500 - 1/1000), IH (1/100 - 1/200), IF/IC (1/100 - 1/500)

Format

Liquid in 0.42% Potassium phosphate, 0.87% Sodium chloride, pH 7.3, 30% glycerol, and 0.09% (W/V) sodium azide.

Storage

Store at -20 °C. Stable for 12 months from date of receipt

Anti-MRPS22 Antibody - Protein Information**Name** MRPS22**Synonyms** C3orf5, RPMS22**Cellular Location**

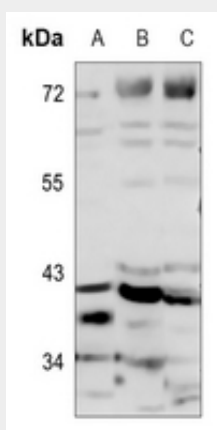
Mitochondrion.

Anti-MRPS22 Antibody - Protocols

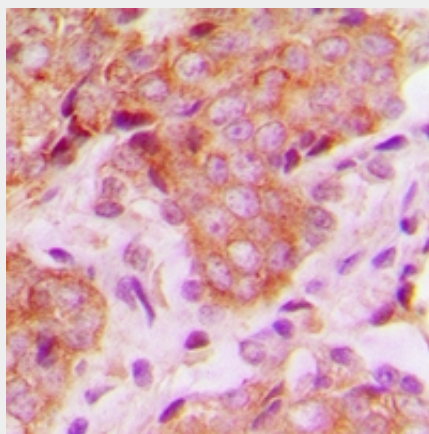
Provided below are standard protocols that you may find useful for product applications.

- [Western Blot](#)
- [Blocking Peptides](#)
- [Dot Blot](#)
- [Immunohistochemistry](#)
- [Immunofluorescence](#)
- [Immunoprecipitation](#)
- [Flow Cytometry](#)
- [Cell Culture](#)

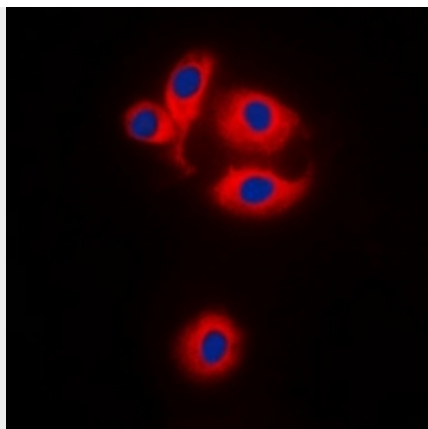
Anti-MRPS22 Antibody - Images



Western blot analysis of MRPS22 expression in K562 (A), mouse liver (B), rat liver (C) whole cell lysates.



Immunohistochemical analysis of MRPS22 staining in human breast cancer formalin fixed paraffin embedded tissue section. The section was pre-treated using heat mediated antigen retrieval with sodium citrate buffer (pH 6.0). The section was then incubated with the antibody at room temperature and detected using an HRP conjugated compact polymer system. DAB was used as the chromogen. The section was then counterstained with haematoxylin and mounted with DPX.



Immunofluorescent analysis of MRPS22 staining in HEK293T cells. Formalin-fixed cells were permeabilized with 0.1% Triton X-100 in TBS for 5-10 minutes and blocked with 3% BSA-PBS for 30 minutes at room temperature. Cells were probed with the primary antibody in 3% BSA-PBS and incubated overnight at 4 °C in a humidified chamber. Cells were washed with PBST and incubated with a DyLight 594-conjugated secondary antibody (red) in PBS at room temperature in the dark. DAPI was used to stain the cell nuclei (blue).

Anti-MRPS22 Antibody - Background

KLH-conjugated synthetic peptide encompassing a sequence within the center region of human MRPS22. The exact sequence is proprietary.