

Anti-GPR40 Antibody
Rabbit polyclonal antibody to GPR40
Catalog # AP60710**Specification**

Anti-GPR40 Antibody - Product Information

Application	WB
Primary Accession	O14842
Other Accession	Q76JU9
Reactivity	Human, Mouse, Rat, Monkey
Host	Rabbit
Clonality	Polyclonal
Calculated MW	31457

Anti-GPR40 Antibody - Additional Information**Gene ID** 2864**Other Names**

GPR40; Free fatty acid receptor 1; G-protein coupled receptor 40

Target/Specificity

KLH-conjugated synthetic peptide encompassing a sequence within the center region of human GPR40. The exact sequence is proprietary.

Dilution

WB~~WB (1/500 - 1/1000)

Format

Liquid in 0.42% Potassium phosphate, 0.87% Sodium chloride, pH 7.3, 30% glycerol, and 0.09% (W/V) sodium azide.

Storage

Store at -20 °C. Stable for 12 months from date of receipt

Anti-GPR40 Antibody - Protein Information**Name** FFAR1**Synonyms** GPR40**Function**

G-protein coupled receptor for medium and long chain saturated and unsaturated fatty acids that plays an important role in glucose homeostasis. Fatty acid binding increases glucose-stimulated insulin secretion, and may also enhance the secretion of glucagon-like peptide 1 (GLP-1). May also play a role in bone homeostasis; receptor signaling activates pathways that inhibit osteoclast differentiation (By similarity). Ligand binding leads to a conformation change that triggers signaling via G-proteins that activate phospholipase C, leading to an increase of the intracellular

calcium concentration. Seems to act through a G(q) and G(i)-mediated pathway. Mediates the anti-inflammatory effects of omega-3 polyunsaturated fatty acids (PUFAs) via inhibition of NLRP3 inflammasome activation.

Cellular Location

Cell membrane; Multi-pass membrane protein

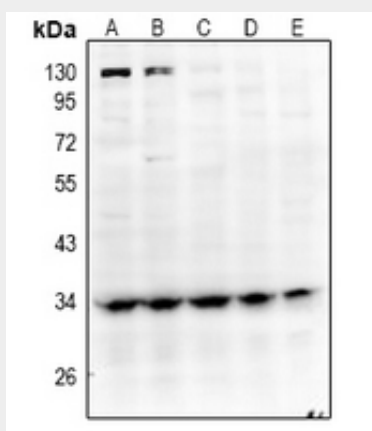
Tissue Location

Detected in brain and pancreas. Detected in pancreatic beta cells.

Anti-GPR40 Antibody - Protocols

Provided below are standard protocols that you may find useful for product applications.

- [Western Blot](#)
- [Blocking Peptides](#)
- [Dot Blot](#)
- [Immunohistochemistry](#)
- [Immunofluorescence](#)
- [Immunoprecipitation](#)
- [Flow Cytometry](#)
- [Cell Culture](#)

Anti-GPR40 Antibody - Images

Western blot analysis of GPR40 expression in SGC7901 (A), A2780 (B), Panc1 (C), mouse brain (D), rat brain (E) whole cell lysates.

Anti-GPR40 Antibody - Background

KLH-conjugated synthetic peptide encompassing a sequence within the center region of human GPR40. The exact sequence is proprietary.