

Anti-TAF5L Antibody
Rabbit polyclonal antibody to TAF5L
Catalog # AP60719**Specification**

Anti-TAF5L Antibody - Product Information

Application	WB, IHC
Primary Accession	O75529
Reactivity	Human, Rabbit, Monkey, Dog
Host	Rabbit
Clonality	Polyclonal
Calculated MW	66155

Anti-TAF5L Antibody - Additional Information**Gene ID** 27097**Other Names**

PAF65B; TAF5-like RNA polymerase II p300/CBP-associated factor-associated factor 65 kDa subunit 5L; PCAF-associated factor 65 beta; PAF65-beta

Target/Specificity

Recognizes endogenous levels of TAF5L protein.

DilutionWB~~WB (1/500 - 1/1000), IH (1/100 - 1/200)
IHC~~1:100~500**Format**

Liquid in 0.42% Potassium phosphate, 0.87% Sodium chloride, pH 7.3, 30% glycerol, and 0.09% (W/V) sodium azide.

Storage

Store at -20 °C. Stable for 12 months from date of receipt

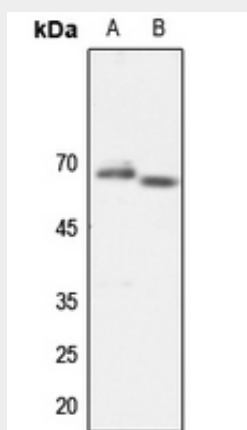
Anti-TAF5L Antibody - Protein Information**Name** TAF5L ([HGNC:17304](#))**Synonyms** PAF65B**Function**

Functions as a component of the PCAF complex. The PCAF complex is capable of efficiently acetylating histones in a nucleosomal context. The PCAF complex could be considered as the human version of the yeast SAGA complex (Probable). With TAF6L, acts as an epigenetic regulator essential for somatic reprogramming. Regulates target genes through H3K9ac deposition and MYC recruitment which trigger MYC regulatory network to orchestrate gene expression programs to control embryonic stem cell state (By similarity).

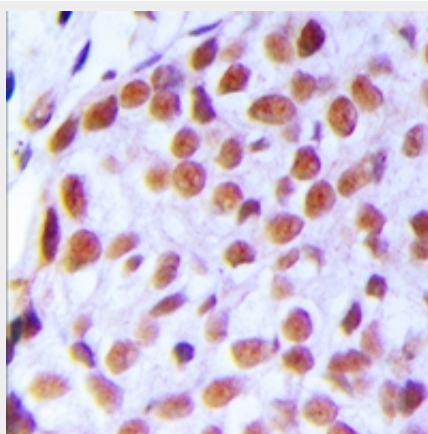
Cellular Location
Nucleus**Anti-TAF5L Antibody - Protocols**

Provided below are standard protocols that you may find useful for product applications.

- [Western Blot](#)
- [Blocking Peptides](#)
- [Dot Blot](#)
- [Immunohistochemistry](#)
- [Immunofluorescence](#)
- [Immunoprecipitation](#)
- [Flow Cytometry](#)
- [Cell Culture](#)

Anti-TAF5L Antibody - Images

Western blot analysis of TAF5L expression in HEK293T (A), HeLa (B) whole cell lysates.



Immunohistochemical analysis of TAF5L staining in human breast cancer formalin fixed paraffin embedded tissue section. The section was pre-treated using heat mediated antigen retrieval with sodium citrate buffer (pH 6.0). The section was then incubated with the antibody at room temperature and detected using an HRP conjugated compact polymer system. DAB was used as the chromogen. The section was then counterstained with haematoxylin and mounted with DPX.

Anti-TAF5L Antibody - Background

KLH-conjugated synthetic peptide encompassing a sequence within the center region of human TAF5L. The exact sequence is proprietary.