

Anti-ID4 Antibody
Rabbit polyclonal antibody to ID4
Catalog # AP60722**Specification**

Anti-ID4 Antibody - Product Information

Application	WB, IH
Primary Accession	P47928
Other Accession	P41139
Reactivity	Human, Mouse, Rat, Pig
Host	Rabbit
Clonality	Polyclonal
Calculated MW	16622

Anti-ID4 Antibody - Additional Information**Gene ID** 3400**Other Names**BHLHB27; DNA-binding protein inhibitor ID-4; Class B basic helix-loop-helix protein 27; bHLHb27;
Inhibitor of DNA binding 4**Target/Specificity**

Recognizes endogenous levels of ID4 protein.

Dilution

WB~~WB (1/500 - 1/1000), IH (1/100 - 1/200)

IH~~WB (1/500 - 1/1000), IH (1/100 - 1/200)

Format

Liquid in 0.42% Potassium phosphate, 0.87% Sodium chloride, pH 7.3, 30% glycerol, and 0.09% (W/V) sodium azide.

Storage

Store at -20 °C. Stable for 12 months from date of receipt

Anti-ID4 Antibody - Protein Information**Name** ID4**Synonyms** BHLHB27**Function**

Transcriptional regulator (lacking a basic DNA binding domain) which negatively regulates the basic helix-loop-helix (bHLH) transcription factors by forming heterodimers and inhibiting their DNA binding and transcriptional activity. Implicated in regulating a variety of cellular processes, including cellular growth, senescence, differentiation, apoptosis, angiogenesis, and neoplastic transformation (By similarity).

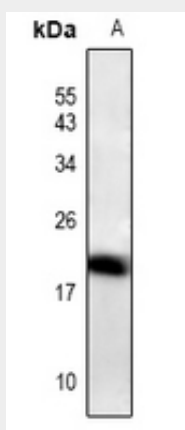
Cellular Location

Nucleus.

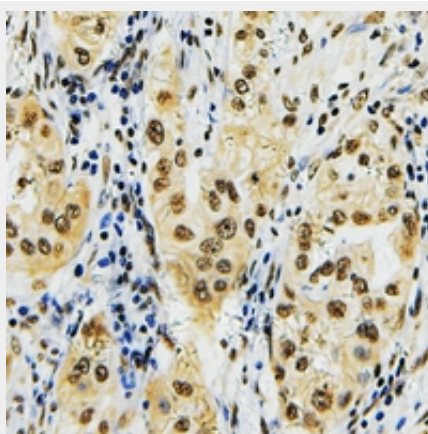
Anti-ID4 Antibody - Protocols

Provided below are standard protocols that you may find useful for product applications.

- [Western Blot](#)
- [Blocking Peptides](#)
- [Dot Blot](#)
- [Immunohistochemistry](#)
- [Immunofluorescence](#)
- [Immunoprecipitation](#)
- [Flow Cytometry](#)
- [Cell Culture](#)

Anti-ID4 Antibody - Images

Western blot analysis of ID4 expression in C6 (A) whole cell lysates.



Immunohistochemical analysis of ID4 staining in human lung cancer formalin fixed paraffin embedded tissue section. The section was pre-treated using heat mediated antigen retrieval with sodium citrate buffer (pH 6.0). The section was then incubated with the antibody at room temperature and detected using an HRP conjugated compact polymer system. DAB was used as the chromogen. The section was then counterstained with haematoxylin and mounted with DPX.

Anti-ID4 Antibody - Background

KLH-conjugated synthetic peptide encompassing a sequence within the N-term region of human ID4. The exact sequence is proprietary.