

Anti-BCA3 Antibody
Rabbit polyclonal antibody to BCA3
Catalog # AP60729**Specification**

Anti-BCA3 Antibody - Product Information

Application	WB, IH
Primary Accession	O9NQ31
Other Accession	O9JJR5
Reactivity	Human, Mouse, Rat, Monkey
Host	Rabbit
Clonality	Polyclonal
Calculated MW	23114

Anti-BCA3 Antibody - Additional Information**Gene ID** 56672**Other Names**

BCA3; C11orf17; A-kinase-interacting protein 1; Breast cancer-associated gene 3 protein; PKA-interacting protein; Proline-rich protein BCA3

Target/Specificity

Recognizes endogenous levels of BCA3 protein.

Dilution

WB~~WB (1/500 - 1/1000), IH (1/100 - 1/200)

IH~~WB (1/500 - 1/1000), IH (1/100 - 1/200)

Format

Liquid in 0.42% Potassium phosphate, 0.87% Sodium chloride, pH 7.3, 30% glycerol, and 0.09% (W/V) sodium azide.

Storage

Store at -20 °C. Stable for 12 months from date of receipt

Anti-BCA3 Antibody - Protein Information**Name** AKIP1**Synonyms** BCA3, C11orf17**Function**

Enhances NF-kappa-B transcriptional activity by regulating the nuclear localization of the NF-kappa-B subunit RELA and promoting the phosphorylation of RELA by PRKACA. Regulates the effect of the cAMP-dependent protein kinase signaling pathway on the NF-kappa-B activation cascade.

Cellular Location

Nucleus. Note=Locates to punctate spots

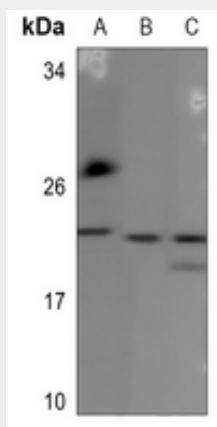
Tissue Location

Expressed at high levels in adult heart and at lower levels in brain, testis, ovary and skeletal muscle. Up-regulated in some breast cancer cell lines. Isoform 1 and isoform 3 are expressed in fetal brain.

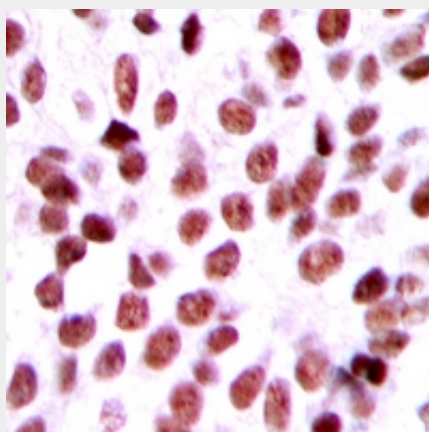
Anti-BCA3 Antibody - Protocols

Provided below are standard protocols that you may find useful for product applications.

- [Western Blot](#)
- [Blocking Peptides](#)
- [Dot Blot](#)
- [Immunohistochemistry](#)
- [Immunofluorescence](#)
- [Immunoprecipitation](#)
- [Flow Cytometry](#)
- [Cell Culture](#)

Anti-BCA3 Antibody - Images

Western blot analysis of BCA3 expression in Jurkat (A), mouse spleen (B), rat spleen (C) whole cell lysates.



Immunohistochemical analysis of BCA3 staining in human breast cancer formalin fixed paraffin embedded tissue section. The section was pre-treated using heat mediated antigen retrieval with sodium citrate buffer (pH 6.0). The section was then incubated with the antibody at room temperature and detected using an HRP conjugated compact polymer system. DAB was used as the chromogen. The section was then counterstained with haematoxylin and mounted with DPX.

Anti-BCA3 Antibody - Background

KLH-conjugated synthetic peptide encompassing a sequence within the center region of human BCA3. The exact sequence is proprietary.