

**Anti-ZC3H7B Antibody**  
**Rabbit polyclonal antibody to ZC3H7B**  
**Catalog # AP60731****Specification**

---

**Anti-ZC3H7B Antibody - Product Information**

Application	WB, IH
Primary Accession	<a href="#">O9UGR2</a>
Reactivity	Human, Mouse, Rat
Host	Rabbit
Clonality	Polyclonal
Calculated MW	109858

**Anti-ZC3H7B Antibody - Additional Information****Gene ID** 23264**Other Names**

KIAA1031; Zinc finger CCCH domain-containing protein 7B; Rotavirus 'X'-associated non-structural protein; RoXaN

**Target/Specificity**

Recognizes endogenous levels of ZC3H7B protein.

**Dilution**

WB~~WB (1/500 - 1/1000), IH (1/100 - 1/200)

IH~~WB (1/500 - 1/1000), IH (1/100 - 1/200)

**Format**

Liquid in 0.42% Potassium phosphate, 0.87% Sodium chloride, pH 7.3, 30% glycerol, and 0.09% (W/V) sodium azide.

**Storage**

Store at -20 °C. Stable for 12 months from date of receipt

**Anti-ZC3H7B Antibody - Protein Information****Name** ZC3H7B**Synonyms** KIAA1031**Function**

May be a specific regulator of miRNA biogenesis. Binds to microRNAs MIR7-1, MIR16-2 and MIR29A hairpins recognizing the 'ATA(A/T)' motif in the apical loop.

**Cellular Location**

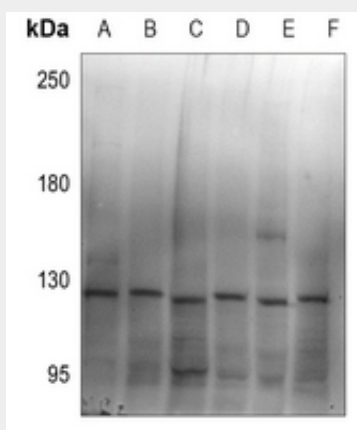
Nucleus. Note=Nuclear localization seems to be depleted upon rotavirus A infection

## Anti-ZC3H7B Antibody - Protocols

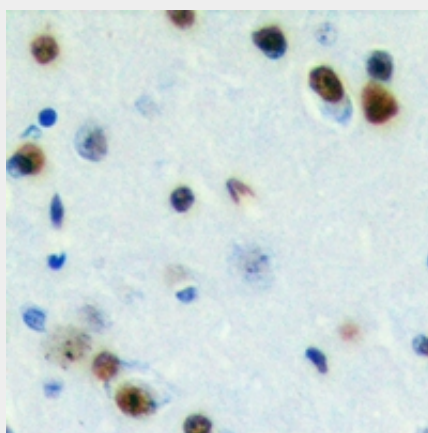
Provided below are standard protocols that you may find useful for product applications.

- [Western Blot](#)
- [Blocking Peptides](#)
- [Dot Blot](#)
- [Immunohistochemistry](#)
- [Immunofluorescence](#)
- [Immunoprecipitation](#)
- [Flow Cytometry](#)
- [Cell Culture](#)

## Anti-ZC3H7B Antibody - Images



Western blot analysis of ZC3H7B expression in U87MG (A), PC3 (B), HEK293T (C), Hela (D), CT26 (E), PC12 (F) whole cell lysates.



Immunohistochemical analysis of ZC3H7B staining in human brain formalin fixed paraffin embedded tissue section. The section was pre-treated using heat mediated antigen retrieval with sodium citrate buffer (pH 6.0). The section was then incubated with the antibody at room temperature and detected using an HRP conjugated compact polymer system. DAB was used as the chromogen. The section was then counterstained with haematoxylin and mounted with DPX.

## Anti-ZC3H7B Antibody - Background

KLH-conjugated synthetic peptide encompassing a sequence within the C-term region of human

ZC3H7B. The exact sequence is proprietary.