

**Anti-TCFL5 Antibody**  
**Rabbit polyclonal antibody to TCFL5**  
**Catalog # AP60733****Specification**

---

**Anti-TCFL5 Antibody - Product Information**

Application	WB, IHC
Primary Accession	<a href="#">O9UL49</a>
Reactivity	Human, Mouse, Monkey
Host	Rabbit
Clonality	Polyclonal
Calculated MW	52697

**Anti-TCFL5 Antibody - Additional Information****Gene ID** 10732**Other Names**

CHA; E2BP1; Transcription factor-like 5 protein; Cha transcription factor; HPV-16 E2-binding protein 1; E2BP-1

**Target/Specificity**

KLH-conjugated synthetic peptide encompassing a sequence within the C-term region of human TCFL5. The exact sequence is proprietary.

**Dilution**WB~~WB (1/500 - 1/1000), IH (1/100 - 1/200)  
IHC~~1:100~500**Format**

Liquid in 0.42% Potassium phosphate, 0.87% Sodium chloride, pH 7.3, 30% glycerol, and 0.09% (W/V) sodium azide.

**Storage**

Store at -20 °C. Stable for 12 months from date of receipt

**Anti-TCFL5 Antibody - Protein Information****Name** TCFL5**Synonyms** CHA, E2BP1**Function**

Putative transcription factor. Isoform 3 may play a role in early spermatogenesis.

**Cellular Location**

Nucleus {ECO:0000255|PROSITE-ProRule:PRU00981, ECO:0000269|PubMed:9763657}

### Tissue Location

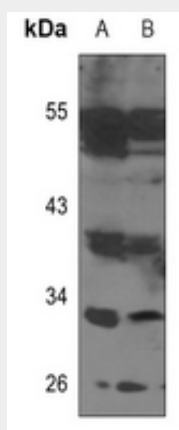
Isoform 3 is testis specific. Isoform 2 is pancreas specific.

### Anti-TCFL5 Antibody - Protocols

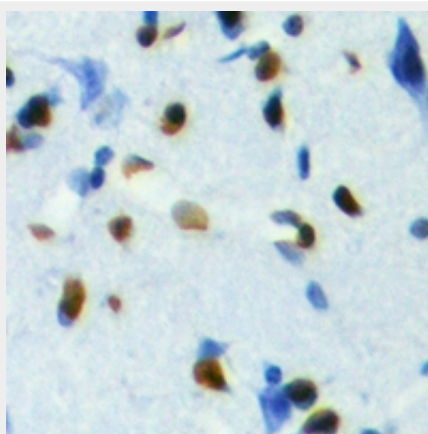
Provided below are standard protocols that you may find useful for product applications.

- [Western Blot](#)
- [Blocking Peptides](#)
- [Dot Blot](#)
- [Immunohistochemistry](#)
- [Immunofluorescence](#)
- [Immunoprecipitation](#)
- [Flow Cytometry](#)
- [Cell Culture](#)

### Anti-TCFL5 Antibody - Images



Western blot analysis of TCFL5 expression in HEK293T (A), MCF7 (B) whole cell lysates.



Immunohistochemical analysis of TCFL5 staining in human brain formalin fixed paraffin embedded tissue section. The section was pre-treated using heat mediated antigen retrieval with sodium citrate buffer (pH 6.0). The section was then incubated with the antibody at room temperature and detected using an HRP conjugated compact polymer system. DAB was used as the chromogen. The section was then counterstained with haematoxylin and mounted with DPX.

### Anti-TCFL5 Antibody - Background

KLH-conjugated synthetic peptide encompassing a sequence within the C-term region of human TCFL5. The exact sequence is proprietary.