

**Anti-ERGIC3 Antibody**  
**Rabbit polyclonal antibody to ERGIC3**  
**Catalog # AP60735****Specification**

---

**Anti-ERGIC3 Antibody - Product Information**

Application	WB, IF/IC, IHC
Primary Accession	<a href="#">O9Y282</a>
Other Accession	<a href="#">O9CQE7</a>
Reactivity	Human, Mouse, Rat, Monkey, Bovine
Host	Rabbit
Clonality	Polyclonal
Calculated MW	43222

**Anti-ERGIC3 Antibody - Additional Information****Gene ID** 51614**Other Names**C20orf47; ERV46; SDBCAG84; Endoplasmic reticulum-Golgi intermediate compartment protein 3;  
Serologically defined breast cancer antigen NY-BR-84**Target/Specificity**

Recognizes endogenous levels of ERGIC3 protein.

**Dilution**

WB~~WB (1/500 - 1/1000), IH (1/100 - 1/200), IF/IC (1/100 - 1/500)

IF/IC~~N/A

IHC~~1:100~500

**Format**

Liquid in 0.42% Potassium phosphate, 0.87% Sodium chloride, pH 7.3, 30% glycerol, and 0.09% (W/V) sodium azide.

**Storage**

Store at -20 °C.Stable for 12 months from date of receipt

**Anti-ERGIC3 Antibody - Protein Information****Name** ERGIC3**Synonyms** C20orf47, ERV46, SDBCAG84**Function**

Possible role in transport between endoplasmic reticulum and Golgi. Positively regulates trafficking of the secretory proteins SERPINA1/alpha1-antitrypsin and HP/haptoglobin (PubMed:&lt;a href="http://www.uniprot.org/citations/31142615" target="\_blank"&gt;31142615&lt;/a&gt;).

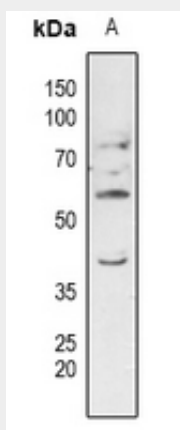
**Cellular Location**

Endoplasmic reticulum-Golgi intermediate compartment membrane; Multi-pass membrane protein. Golgi apparatus, cis-Golgi network membrane; Multi-pass membrane protein. Endoplasmic reticulum membrane; Multi-pass membrane protein. Note=Cycles between the endoplasmic reticulum and the Golgi

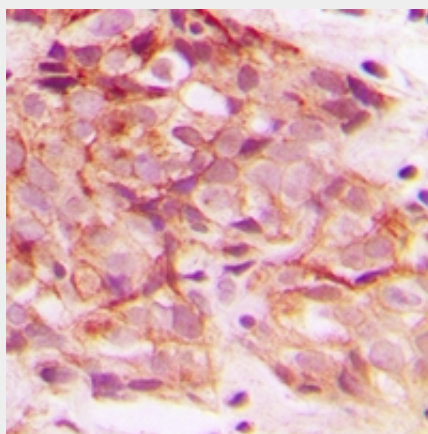
**Anti-ERGIC3 Antibody - Protocols**

Provided below are standard protocols that you may find useful for product applications.

- [Western Blot](#)
- [Blocking Peptides](#)
- [Dot Blot](#)
- [Immunohistochemistry](#)
- [Immunofluorescence](#)
- [Immunoprecipitation](#)
- [Flow Cytometry](#)
- [Cell Culture](#)

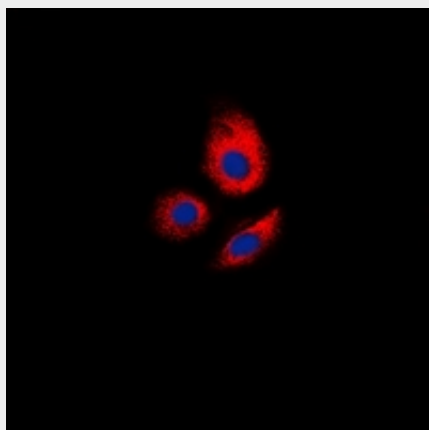
**Anti-ERGIC3 Antibody - Images**

Western blot analysis of ERGIC3 expression in rat brain (A) whole cell lysates.



Immunohistochemical analysis of ERGIC3 staining in human breast cancer formalin fixed paraffin embedded tissue section. The section was pre-treated using heat mediated antigen retrieval with sodium citrate buffer (pH 6.0). The section was then incubated with the antibody at room

temperature and detected using an HRP conjugated compact polymer system. DAB was used as the chromogen. The section was then counterstained with haematoxylin and mounted with DPX.



Immunofluorescent analysis of ERGIC3 staining in MCF7 cells. Formalin-fixed cells were permeabilized with 0.1% Triton X-100 in TBS for 5-10 minutes and blocked with 3% BSA-PBS for 30 minutes at room temperature. Cells were probed with the primary antibody in 3% BSA-PBS and incubated overnight at 4 °C in a humidified chamber. Cells were washed with PBST and incubated with a DyLight 594-conjugated secondary antibody (red) in PBS at room temperature in the dark. DAPI was used to stain the cell nuclei (blue).

#### **Anti-ERGIC3 Antibody - Background**

KLH-conjugated synthetic peptide encompassing a sequence within the C-term region of human ERGIC3. The exact sequence is proprietary.