

Anti-CADM2 Antibody
Rabbit polyclonal antibody to CADM2
Catalog # AP60741**Specification**

Anti-CADM2 Antibody - Product Information

| | |
|-------------------|------------------------|
| Application | WB, IF/IC, IHC |
| Primary Accession | Q8N3J6 |
| Other Accession | Q8BLQ9 |
| Reactivity | Human, Mouse, Rat |
| Host | Rabbit |
| Clonality | Polyclonal |
| Calculated MW | 47554 |

Anti-CADM2 Antibody - Additional Information**Gene ID** 253559**Other Names**

IGSF4D; NECL3; Cell adhesion molecule 2; Immunoglobulin superfamily member 4D; IgSF4D; Nectin-like protein 3; NECL-3; Synaptic cell adhesion molecule 2; SynCAM 2

Target/Specificity

KLH-conjugated synthetic peptide encompassing a sequence within the center region of human CADM2. The exact sequence is proprietary.

Dilution

WB~~WB (1/500 - 1/1000), IH (1/100 - 1/200), IF/IC (1/100 - 1/500)

IF/IC~~N/A

IHC~~1:100~500

Format

Liquid in 0.42% Potassium phosphate, 0.87% Sodium chloride, pH 7.3, 30% glycerol, and 0.09% (W/V) sodium azide.

Storage

Store at -20 °C. Stable for 12 months from date of receipt

Anti-CADM2 Antibody - Protein Information**Name** CADM2**Synonyms** IGSF4D, NECL3**Function**

Adhesion molecule that engages in homo- and heterophilic interactions with the other nectin-like family members, leading to cell aggregation. Important for synapse organization, providing regulated trans-synaptic adhesion. Preferentially binds to oligodendrocytes.

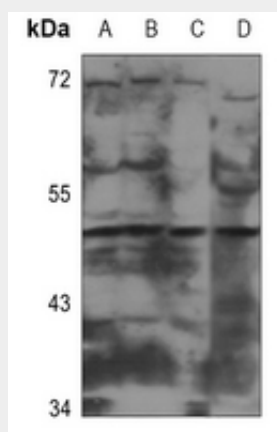
Cellular Location

Cell membrane; Single-pass type I membrane protein Synapse. Cell projection, axon. Note=Found in the axoplasm of myelinated axons

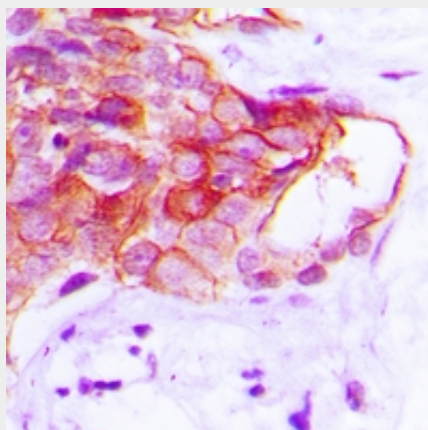
Anti-CADM2 Antibody - Protocols

Provided below are standard protocols that you may find useful for product applications.

- [Western Blot](#)
- [Blocking Peptides](#)
- [Dot Blot](#)
- [Immunohistochemistry](#)
- [Immunofluorescence](#)
- [Immunoprecipitation](#)
- [Flow Cytometry](#)
- [Cell Culture](#)

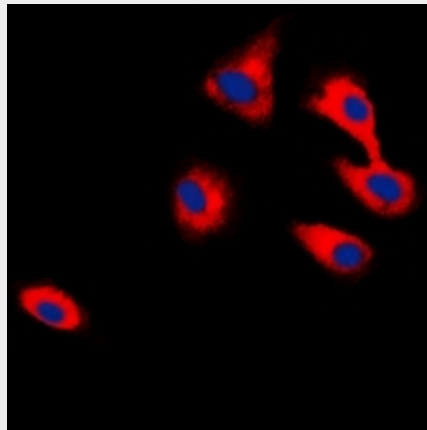
Anti-CADM2 Antibody - Images

Western blot analysis of CADM2 expression in HEK293T (A), Hela (B), PC3 (C), rat liver (D) whole cell lysates.



Immunohistochemical analysis of CADM2 staining in human prostate cancer formalin fixed paraffin embedded tissue section. The section was pre-treated using heat mediated antigen retrieval with sodium citrate buffer (pH 6.0). The section was then incubated with the antibody at room temperature and detected using an HRP conjugated compact polymer system. DAB was

used as the chromogen. The section was then counterstained with haematoxylin and mounted with DPX.



Immunofluorescent analysis of CADM2 staining in HepG2 cells. Formalin-fixed cells were permeabilized with 0.1% Triton X-100 in TBS for 5-10 minutes and blocked with 3% BSA-PBS for 30 minutes at room temperature. Cells were probed with the primary antibody in 3% BSA-PBS and incubated overnight at 4 °C in a humidified chamber. Cells were washed with PBST and incubated with a DyLight 594-conjugated secondary antibody (red) in PBS at room temperature in the dark. DAPI was used to stain the cell nuclei (blue).

Anti-CADM2 Antibody - Background

KLH-conjugated synthetic peptide encompassing a sequence within the center region of human CADM2. The exact sequence is proprietary.