

Anti-CADM3 Antibody
Rabbit polyclonal antibody to CADM3
Catalog # AP60742

Specification

Anti-CADM3 Antibody - Product Information

Application	WB
Primary Accession	Q8N126
Other Accession	Q99N28
Reactivity	Human, Mouse, Bovine
Host	Rabbit
Clonality	Polyclonal
Calculated MW	43300

Anti-CADM3 Antibody - Additional Information

Gene ID 57863

Other Names

IGSF4B; NECL1; SYNCAM3; TSLL1; Cell adhesion molecule 3; Brain immunoglobulin receptor; Immunoglobulin superfamily member 4B; IgSF4B; Nectin-like protein 1; NECL-1; Synaptic cell adhesion molecule 3; SynCAM3; TSLC1-like protein 1; TSLL1

Target/Specificity

Recognizes endogenous levels of CADM3 protein.

Dilution

WB~~WB (1/500 - 1/1000)

Format

Liquid in 0.42% Potassium phosphate, 0.87% Sodium chloride, pH 7.3, 30% glycerol, and 0.09% (W/V) sodium azide.

Storage

Store at -20 °C. Stable for 12 months from date of receipt

Anti-CADM3 Antibody - Protein Information

Name CADM3

Synonyms IGSF4B, NECL1, SYNCAM3, TSLL1

Function

Involved in the cell-cell adhesion. Has both calcium- independent homophilic cell-cell adhesion activity and calcium- independent heterophilic cell-cell adhesion activity with IGSF4, NECTIN1 and NECTIN3. Interaction with EPB41L1 may regulate structure or function of cell-cell junctions (By similarity).

Cellular Location

Cell membrane {ECO:0000250|UniProtKB:Q99N28}; Single-pass type I membrane protein {ECO:0000250|UniProtKB:Q99N28} Cell junction {ECO:0000250|UniProtKB:Q99N28}

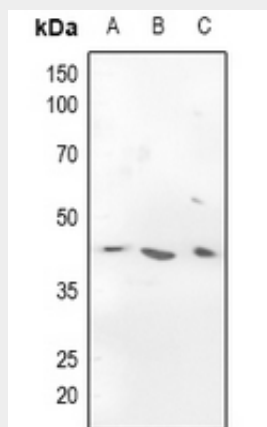
Tissue Location

Isoform 1 is expressed mainly in adult and fetal brain. Isoform 2 is highly expressed in adult brain and weakly expressed in placenta. In brain, Isoform 2 is highly expressed in cerebellum.

Anti-CADM3 Antibody - Protocols

Provided below are standard protocols that you may find useful for product applications.

- [Western Blot](#)
- [Blocking Peptides](#)
- [Dot Blot](#)
- [Immunohistochemistry](#)
- [Immunofluorescence](#)
- [Immunoprecipitation](#)
- [Flow Cytometry](#)
- [Cell Culture](#)

Anti-CADM3 Antibody - Images

Western blot analysis of CADM3 expression in HEK293T (A), Hela (B), mouse brain (C) whole cell lysates.

Anti-CADM3 Antibody - Background

KLH-conjugated synthetic peptide encompassing a sequence within the center region of human CADM3. The exact sequence is proprietary.