

Anti-DIDO1 Antibody
Rabbit polyclonal antibody to DIDO1
Catalog # AP60746**Specification**

Anti-DIDO1 Antibody - Product Information

Application	WB, IH
Primary Accession	Q9BTC0
Reactivity	Human, Monkey
Host	Rabbit
Clonality	Polyclonal
Calculated MW	243873

Anti-DIDO1 Antibody - Additional Information**Gene ID** 11083**Other Names**

C20orf158; DATF1; KIAA0333; Death-inducer obliterator 1; DIO-1; hDido1; Death-associated transcription factor 1; DATF-1

Target/Specificity

Recognizes endogenous levels of DIDO1 protein.

Dilution

WB~~WB (1/500 - 1/1000), IH (1/100 - 1/200)

IH~~WB (1/500 - 1/1000), IH (1/100 - 1/200)

Format

Liquid in 0.42% Potassium phosphate, 0.87% Sodium chloride, pH 7.3, 30% glycerol, and 0.09% (W/V) sodium azide.

Storage

Store at -20 °C. Stable for 12 months from date of receipt

Anti-DIDO1 Antibody - Protein Information**Name** DIDO1**Synonyms** C20orf158, DATF1, KIAA0333**Function**

Putative transcription factor, weakly pro-apoptotic when overexpressed (By similarity). Tumor suppressor. Required for early embryonic stem cell development.

Cellular Location

Cytoplasm. Nucleus {ECO:0000255|PROSITE-ProRule:PRU00651}. Cytoplasm, cytoskeleton, spindle. Note=Translocates to the nucleus after pro-apoptotic stimuli (By similarity). Translocates

to the mitotic spindle upon loss of interaction with H3K4me3 during early mitosis.

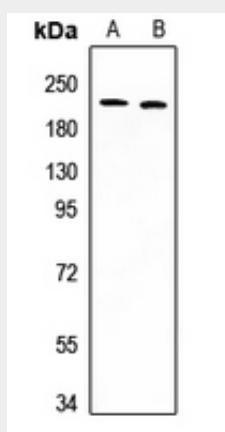
Tissue Location

Ubiquitous.

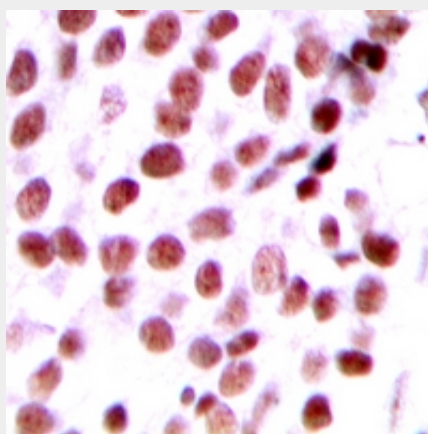
Anti-DIDO1 Antibody - Protocols

Provided below are standard protocols that you may find useful for product applications.

- [Western Blot](#)
- [Blocking Peptides](#)
- [Dot Blot](#)
- [Immunohistochemistry](#)
- [Immunofluorescence](#)
- [Immunoprecipitation](#)
- [Flow Cytometry](#)
- [Cell Culture](#)

Anti-DIDO1 Antibody - Images

Western blot analysis of DIDO1 expression in Hela (A), A2780 (B) whole cell lysates.



Immunohistochemical analysis of DIDO1 staining in human breast cancer formalin fixed paraffin embedded tissue section. The section was pre-treated using heat mediated antigen retrieval with sodium citrate buffer (pH 6.0). The section was then incubated with the antibody at room temperature and detected using an HRP conjugated compact polymer system. DAB was used as

the chromogen. The section was then counterstained with haematoxylin and mounted with DPX.

Anti-DIDO1 Antibody - Background

KLH-conjugated synthetic peptide encompassing a sequence within the N-term region of human DIDO1. The exact sequence is proprietary.