

**Anti-ACBD6 Antibody**  
**Rabbit polyclonal antibody to ACBD6**  
**Catalog # AP60748****Specification**

---

**Anti-ACBD6 Antibody - Product Information**

|                   |                        |
|-------------------|------------------------|
| Application       | WB, IHC                |
| Primary Accession | <a href="#">Q9BR61</a> |
| Other Accession   | <a href="#">Q9D061</a> |
| Reactivity        | Human, Mouse, Rat      |
| Host              | Rabbit                 |
| Clonality         | Polyclonal             |
| Calculated MW     | 31151                  |

**Anti-ACBD6 Antibody - Additional Information****Gene ID** 84320**Other Names**

Acyl-CoA-binding domain-containing protein 6

**Target/Specificity**

KLH-conjugated synthetic peptide encompassing a sequence within the center region of human ACBD6. The exact sequence is proprietary.

**Dilution**

WB~~WB (1/500 - 1/1000), IH (1/100 - 1/200)

IHC~~1:100~500

**Format**

Liquid in 0.42% Potassium phosphate, 0.87% Sodium chloride, pH 7.3, 30% glycerol, and 0.09% (W/V) sodium azide.

**Storage**

Store at -20 °C. Stable for 12 months from date of receipt

**Anti-ACBD6 Antibody - Protein Information****Name** ACBD6**Function**

Binds long-chain acyl-coenzyme A molecules with a strong preference for unsaturated C18:1-CoA, lower affinity for unsaturated C20:4-CoA, and very weak affinity for saturated C16:0-CoA. Does not bind fatty acids. Plays a role in protein N-myristoylation (PubMed:&lt;a href="http://www.uniprot.org/citations/37951597" target="\_blank"&gt;37951597&lt;/a&gt;).

**Cellular Location**

Cytoplasm. Nucleus

### Tissue Location

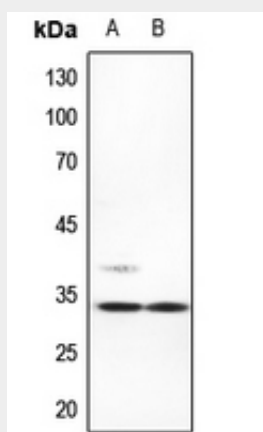
Detected in placenta and spleen (at protein level). Detected in placenta, umbilical cord blood, CD34-positive hematopoietic progenitor cells and bone marrow.

### Anti-ACBD6 Antibody - Protocols

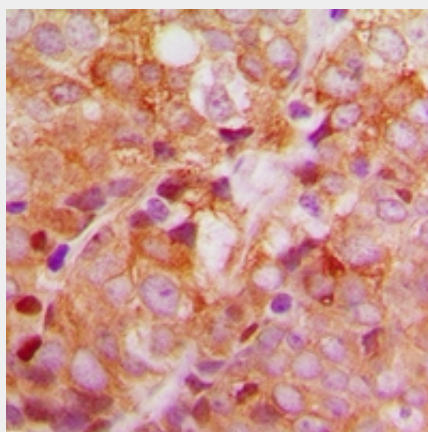
Provided below are standard protocols that you may find useful for product applications.

- [Western Blot](#)
- [Blocking Peptides](#)
- [Dot Blot](#)
- [Immunohistochemistry](#)
- [Immunofluorescence](#)
- [Immunoprecipitation](#)
- [Flow Cytometry](#)
- [Cell Culture](#)

### Anti-ACBD6 Antibody - Images



Western blot analysis of ACBD6 expression in mouse lung (A), mouse liver (B) whole cell lysates.



Immunohistochemical analysis of ACBD6 staining in human breast cancer formalin fixed paraffin embedded tissue section. The section was pre-treated using heat mediated antigen retrieval with sodium citrate buffer (pH 6.0). The section was then incubated with the antibody at room temperature and detected using an HRP conjugated compact polymer system. DAB was used as the chromogen. The section was then counterstained with haematoxylin and mounted with DPX.

**Anti-ACBD6 Antibody - Background**

KLH-conjugated synthetic peptide encompassing a sequence within the center region of human ACBD6. The exact sequence is proprietary.