

**Anti-APBB2 Antibody**  
**Rabbit polyclonal antibody to APBB2**  
**Catalog # AP60749****Specification**

---

**Anti-APBB2 Antibody - Product Information**

|                   |                           |
|-------------------|---------------------------|
| Application       | WB, IH                    |
| Primary Accession | <a href="#">O92870</a>    |
| Other Accession   | <a href="#">O9DBR4</a>    |
| Reactivity        | Human, Mouse, Rat, Bovine |
| Host              | Rabbit                    |
| Clonality         | Polyclonal                |
| Calculated MW     | 83374                     |

**Anti-APBB2 Antibody - Additional Information****Gene ID** 323**Other Names**

FE65L; FE65L1; Amyloid beta A4 precursor protein-binding family B member 2; Protein Fe65-like 1

**Target/Specificity**

Recognizes endogenous levels of APBB2 protein.

**Dilution**

WB~~WB (1/500 - 1/1000), IH (1/100 - 1/200)

IH~~WB (1/500 - 1/1000), IH (1/100 - 1/200)

**Format**

Liquid in 0.42% Potassium phosphate, 0.87% Sodium chloride, pH 7.3, 30% glycerol, and 0.09% (W/V) sodium azide.

**Storage**

Store at -20 °C. Stable for 12 months from date of receipt

**Anti-APBB2 Antibody - Protein Information****Name** APBB2 ([HGNC:582](#))**Function**

Plays a role in the maintenance of lens transparency, and may also play a role in muscle cell strength (By similarity). Involved in hippocampal neurite branching and neuromuscular junction formation, as a result plays a role in spatial memory functioning (By similarity). Activates transcription of APP (PubMed:<a href="http://www.uniprot.org/citations/14527950" target="\_blank">14527950</a>).

**Cellular Location**

Endoplasmic reticulum. Golgi apparatus. Early endosome

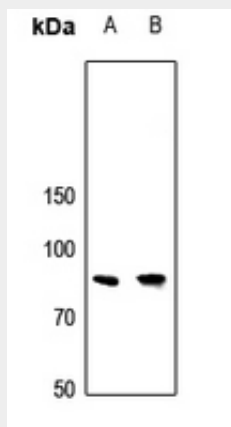
**Tissue Location**

Widely expressed..

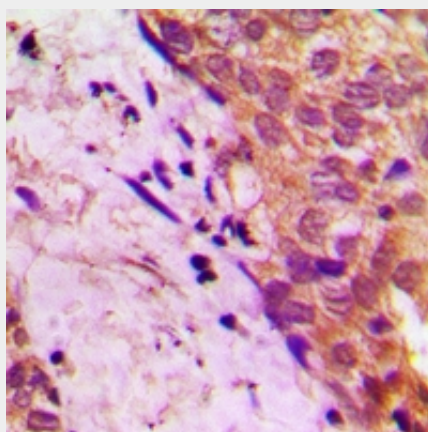
**Anti-APBB2 Antibody - Protocols**

Provided below are standard protocols that you may find useful for product applications.

- [Western Blot](#)
- [Blocking Peptides](#)
- [Dot Blot](#)
- [Immunohistochemistry](#)
- [Immunofluorescence](#)
- [Immunoprecipitation](#)
- [Flow Cytometry](#)
- [Cell Culture](#)

**Anti-APBB2 Antibody - Images**

Western blot analysis of APBB2 expression in DLD (A), mouse brain (B) whole cell lysates.



Immunohistochemical analysis of APBB2 staining in human prostate cancer formalin fixed paraffin embedded tissue section. The section was pre-treated using heat mediated antigen retrieval with sodium citrate buffer (pH 6.0). The section was then incubated with the antibody at room temperature and detected using an HRP conjugated compact polymer system. DAB was used as the chromogen. The section was then counterstained with haematoxylin and mounted with DPX.

**Anti-APBB2 Antibody - Background**

KLH-conjugated synthetic peptide encompassing a sequence within the center region of human APBB2. The exact sequence is proprietary.