

Anti-Arylsulfatase G Antibody
Rabbit polyclonal antibody to Arylsulfatase G
Catalog # AP60750**Specification**

Anti-Arylsulfatase G Antibody - Product Information

Application	WB, IHC
Primary Accession	O96EG1
Other Accession	Q3TYD4
Reactivity	Human, Mouse, Rat
Host	Rabbit
Clonality	Polyclonal
Calculated MW	57061

Anti-Arylsulfatase G Antibody - Additional Information**Gene ID** 22901**Other Names**

KIAA1001; Arylsulfatase G; ASG

Target/Specificity

Recognizes endogenous levels of Arylsulfatase G protein.

Dilution

WB~~WB (1/500 - 1/1000), IH (1/100 - 1/200)

IHC~~1:100~500

Format

Liquid in 0.42% Potassium phosphate, 0.87% Sodium chloride, pH 7.3, 30% glycerol, and 0.09% (W/V) sodium azide.

Storage

Store at -20 °C. Stable for 12 months from date of receipt

Anti-Arylsulfatase G Antibody - Protein Information**Name** ARSG**Synonyms** KIAA1001**Function**

Displays arylsulfatase activity at acidic pH towards artificial substrates, such as p-nitrocatechol sulfate and also, but with a lower activity towards p-nitrophenyl sulfate and 4- methylumbelliferyl sulfate (PubMed:18283100, PubMed:29300381). Catalyzes the hydrolysis of the 3-sulfate groups of the N-sulfo-D- glucosamine 3-O-sulfate units of heparin (PubMed:18283100).

href="http://www.uniprot.org/citations/22689975" target="_blank">22689975).

Cellular Location

Lysosome. Note=The 63-kDa precursor protein localizes to pre-lysosomal compartments and tightly associates with organelle membranes, most likely the endoplasmic reticulum. In contrast, proteolytically processed fragments of 34-, 18- and 10-kDa are found in lysosomal fractions and lose their membrane association {ECO:0000250|UniProtKB:Q3TYD4}

Tissue Location

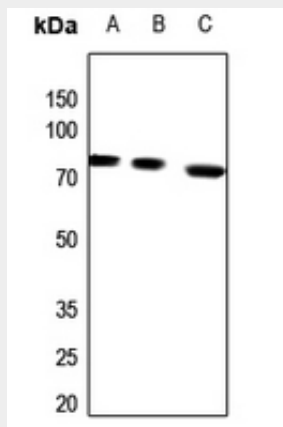
Widely expressed, with very low expression in brain, lung, heart and skeletal muscle.

Anti-Arylsulfatase G Antibody - Protocols

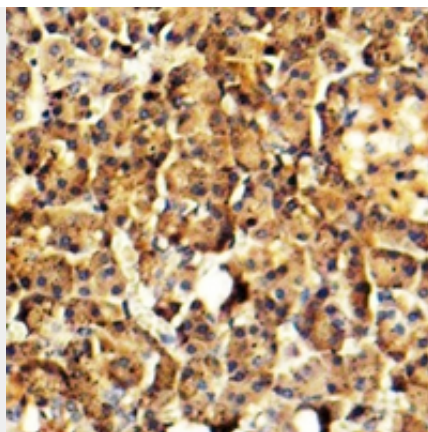
Provided below are standard protocols that you may find useful for product applications.

- [Western Blot](#)
- [Blocking Peptides](#)
- [Dot Blot](#)
- [Immunohistochemistry](#)
- [Immunofluorescence](#)
- [Immunoprecipitation](#)
- [Flow Cytometry](#)
- [Cell Culture](#)

Anti-Arylsulfatase G Antibody - Images



Western blot analysis of Arylsulfatase G expression in HEK293T (A), Hela (B), rat liver (C) whole cell lysates.



Immunohistochemical analysis of Arylsulfatase G staining in human pancreas formalin fixed paraffin embedded tissue section. The section was pre-treated using heat mediated antigen retrieval with sodium citrate buffer (pH 6.0). The section was then incubated with the antibody at room temperature and detected using an HRP conjugated compact polymer system. DAB was used as the chromogen. The section was then counterstained with haematoxylin and mounted with DPX.

Anti-Arylsulfatase G Antibody - Background

KLH-conjugated synthetic peptide encompassing a sequence within the center region of human Arylsulfatase G. The exact sequence is proprietary.