

Anti-DDX19B Antibody
Rabbit polyclonal antibody to DDX19B
Catalog # AP60752**Specification**

Anti-DDX19B Antibody - Product Information

Application	WB, IHC
Primary Accession	Q9UMR2
Reactivity	Human, Mouse
Host	Rabbit
Clonality	Polyclonal
Calculated MW	53927

Anti-DDX19B Antibody - Additional Information**Gene ID** 11269**Other Names**

DBP5; DDX19; TDBP; ATP-dependent RNA helicase DDX19B; DEAD box RNA helicase DEAD5; DEAD box protein 19B

Target/Specificity

KLH-conjugated synthetic peptide encompassing a sequence within the N-term region of human DDX19B. The exact sequence is proprietary.

Dilution

WB~~WB (1/500 - 1/1000), IH (1/100 - 1/200)

IHC~~1:100~500

Format

Liquid in 0.42% Potassium phosphate, 0.87% Sodium chloride, pH 7.3, 30% glycerol, and 0.09% (W/V) sodium azide.

Storage

Store at -20 °C. Stable for 12 months from date of receipt

Anti-DDX19B Antibody - Protein Information**Name** DDX19B**Synonyms** DBP5, DDX19, TDBP**Function**ATP-dependent RNA helicase involved in mRNA export from the nucleus (PubMed: [10428971](http://www.uniprot.org/citations/10428971)). Rather than unwinding RNA duplexes, DDX19B functions as a remodeler of ribonucleoprotein particles, whereby proteins bound to nuclear mRNA are dissociated and replaced by cytoplasmic mRNA binding proteins (PubMed: [10428971](http://www.uniprot.org/citations/10428971))

target="_blank">10428971).

Cellular Location

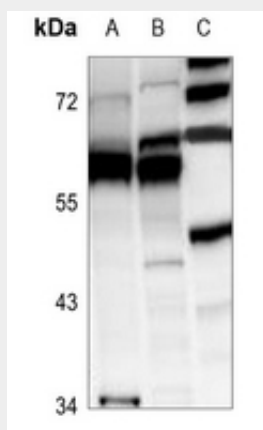
Cytoplasm. Nucleus, nucleoplasm. Note=Associates with the nuclear pore complex cytoplasmic fibrils

Anti-DDX19B Antibody - Protocols

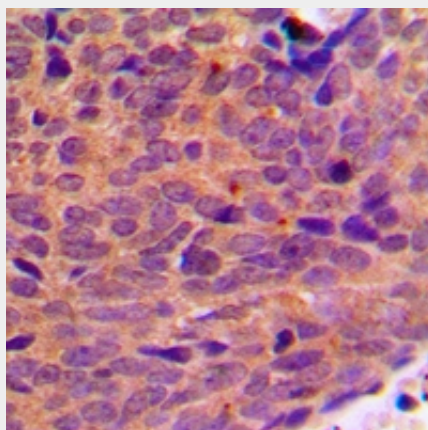
Provided below are standard protocols that you may find useful for product applications.

- [Western Blot](#)
- [Blocking Peptides](#)
- [Dot Blot](#)
- [Immunohistochemistry](#)
- [Immunofluorescence](#)
- [Immunoprecipitation](#)
- [Flow Cytometry](#)
- [Cell Culture](#)

Anti-DDX19B Antibody - Images



Western blot analysis of DDX19B expression in LO2 (A), A375 (B), mouse kidney (C) whole cell lysates.



Immunohistochemical analysis of DDX19B staining in human breast cancer formalin fixed paraffin embedded tissue section. The section was pre-treated using heat mediated antigen retrieval with

sodium citrate buffer (pH 6.0). The section was then incubated with the antibody at room temperature and detected using an HRP conjugated compact polymer system. DAB was used as the chromogen. The section was then counterstained with haematoxylin and mounted with DPX.

Anti-DDX19B Antibody - Background

KLH-conjugated synthetic peptide encompassing a sequence within the N-term region of human DDX19B. The exact sequence is proprietary.