

Anti-B4GALT1 Antibody
Rabbit polyclonal antibody to B4GALT1
Catalog # AP60753**Specification**

Anti-B4GALT1 Antibody - Product Information

Application	WB, IHC
Primary Accession	P15291
Other Accession	P15535
Reactivity	Human, Mouse, Rat, Monkey, Bovine
Host	Rabbit
Clonality	Polyclonal
Calculated MW	43920

Anti-B4GALT1 Antibody - Additional Information**Gene ID** 2683**Other Names**

GGTB2; Beta-1, 4-galactosyltransferase 1; Beta-1, 4-GalTase 1; Beta4Gal-T1; b4Gal-T1;
UDP-Gal:beta-GlcNAc beta-1, 4-galactosyltransferase 1; UDP-galactose:beta-N-acetylglucosamine
beta-1, 4-galactosyltransferase 1

Target/Specificity

Recognizes endogenous levels of B4GALT1 protein.

Dilution

WB~~WB (1/500 - 1/1000), IH (1/100 - 1/200)

IHC~~1:100~500

Format

Liquid in 0.42% Potassium phosphate, 0.87% Sodium chloride, pH 7.3, 30% glycerol, and 0.09% (W/V) sodium azide.

Storage

Store at -20 °C.Stable for 12 months from date of receipt

Anti-B4GALT1 Antibody - Protein Information**Name** B4GALT1 ([HGNC:924](#))**Synonyms** GGTB2**Function**

[Beta-1,4-galactosyltransferase 1]: The Golgi complex form catalyzes the production of lactose in the lactating mammary gland and could also be responsible for the synthesis of complex-type N-linked oligosaccharides in many glycoproteins as well as the carbohydrate moieties of glycolipids.

Cellular Location

[Isoform Long]: Golgi apparatus, Golgi stack membrane; Single-pass type II membrane protein. Cell membrane; Single-pass type II membrane protein Cell surface. Cell projection, filopodium {ECO:0000250|UniProtKB:P15535}. Note=Found in trans cisternae of Golgi but is mainly localized at the plasma membrane (PubMed:1714903) B4GALT1 cell surface expression is regulated by UBE2Q1 (By similarity) {ECO:0000250|UniProtKB:P15535, ECO:0000269|PubMed:1714903} [Processed beta-1,4-galactosyltransferase 1]: Secreted. Note=Soluble form found in body fluids.

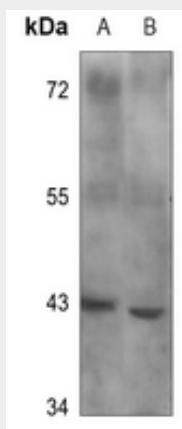
Tissue Location

Ubiquitously expressed, but at very low levels in fetal and adult brain

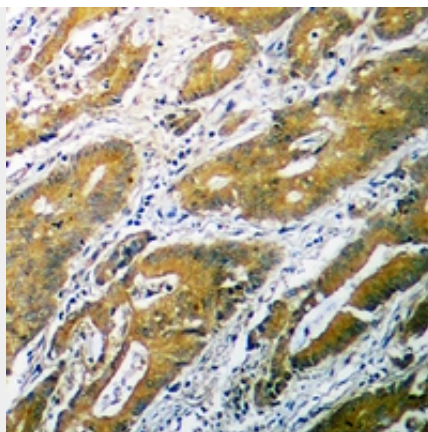
Anti-B4GALT1 Antibody - Protocols

Provided below are standard protocols that you may find useful for product applications.

- [Western Blot](#)
- [Blocking Peptides](#)
- [Dot Blot](#)
- [Immunohistochemistry](#)
- [Immunofluorescence](#)
- [Immunoprecipitation](#)
- [Flow Cytometry](#)
- [Cell Culture](#)

Anti-B4GALT1 Antibody - Images

Western blot analysis of B4GALT1 expression in mouse liver (A), rat liver (B) whole cell lysates.



Immunohistochemical analysis of B4GALT1 staining in human colon cancer formalin fixed paraffin embedded tissue section. The section was pre-treated using heat mediated antigen retrieval with sodium citrate buffer (pH 6.0). The section was then incubated with the antibody at room temperature and detected using an HRP conjugated compact polymer system. DAB was used as the chromogen. The section was then counterstained with haematoxylin and mounted with DPX.

Anti-B4GALT1 Antibody - Background

KLH-conjugated synthetic peptide encompassing a sequence within the C-term region of human B4GALT1. The exact sequence is proprietary.