

Anti-CEP76 Antibody
Rabbit polyclonal antibody to CEP76
Catalog # AP60755**Specification**

Anti-CEP76 Antibody - Product Information

Application	WB, IHC
Primary Accession	Q8TAP6
Other Accession	Q0VEJ0
Reactivity	Human, Mouse, Rat, Zebrafish, Monkey
Host	Rabbit
Clonality	Polyclonal
Calculated MW	74413

Anti-CEP76 Antibody - Additional Information**Gene ID** 79959**Other Names**

C18orf9; Centrosomal protein of 76 kDa; Cep76

Target/Specificity

Recognizes endogenous levels of CEP76 protein.

Dilution

WB~~WB (1/500 - 1/1000), IH (1/100 - 1/200)

IHC~~1:100~500

Format

Liquid in 0.42% Potassium phosphate, 0.87% Sodium chloride, pH 7.3, 30% glycerol, and 0.09% (W/V) sodium azide.

Storage

Store at -20 °C. Stable for 12 months from date of receipt

Anti-CEP76 Antibody - Protein Information**Name** CEP76**Synonyms** C18orf9**Function**

Centrosomal protein involved in regulation of centriole duplication. Required to limit centriole duplication to once per cell cycle by preventing centriole reduplication.

Cellular Location

Cytoplasm, cytoskeleton, microtubule organizing center, centrosome. Cytoplasm, cytoskeleton, microtubule organizing center, centrosome, centriole Note=Does not localize along the ciliary

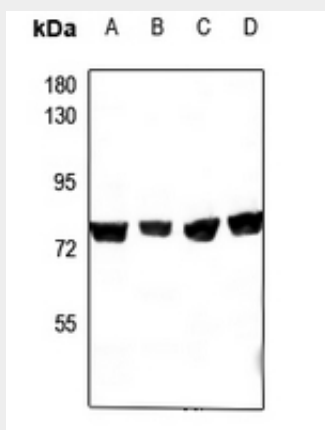
axoneme

Anti-CEP76 Antibody - Protocols

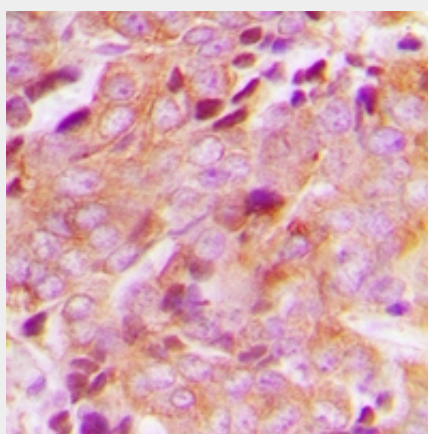
Provided below are standard protocols that you may find useful for product applications.

- [Western Blot](#)
- [Blocking Peptides](#)
- [Dot Blot](#)
- [Immunohistochemistry](#)
- [Immunofluorescence](#)
- [Immunoprecipitation](#)
- [Flow Cytometry](#)
- [Cell Culture](#)

Anti-CEP76 Antibody - Images



Western blot analysis of CEP76 expression in COS7 (A), PC3 (B), CT26 (C), PC12 (D) whole cell lysates.



Immunohistochemical analysis of CEP76 staining in human breast cancer formalin fixed paraffin embedded tissue section. The section was pre-treated using heat mediated antigen retrieval with sodium citrate buffer (pH 6.0). The section was then incubated with the antibody at room temperature and detected using an HRP conjugated compact polymer system. DAB was used as the chromogen. The section was then counterstained with haematoxylin and mounted with DPX.

Anti-CEP76 Antibody - Background

KLH-conjugated synthetic peptide encompassing a sequence within the center region of human CEP76. The exact sequence is proprietary.