

**Anti-RRP8 Antibody**  
**Rabbit polyclonal antibody to RRP8**  
**Catalog # AP60756****Specification**

---

**Anti-RRP8 Antibody - Product Information**

Application	WB, IHC
Primary Accession	<a href="#">O43159</a>
Reactivity	Human, Mouse, Rat
Host	Rabbit
Clonality	Polyclonal
Calculated MW	50715

**Anti-RRP8 Antibody - Additional Information****Gene ID** 23378**Other Names**

KIAA0409; NML; Ribosomal RNA-processing protein 8; Cerebral protein 1; Nucleomethylin

**Target/Specificity**

KLH-conjugated synthetic peptide encompassing a sequence within the center region of human RRP8. The exact sequence is proprietary.

**Dilution**

WB~~WB (1/500 - 1/1000), IH (1/100 - 1/200)

IHC~~1:100~500

**Format**

Liquid in 0.42% Potassium phosphate, 0.87% Sodium chloride, pH 7.3, 30% glycerol, and 0.09% (W/V) sodium azide.

**Storage**

Store at -20 °C. Stable for 12 months from date of receipt

**Anti-RRP8 Antibody - Protein Information****Name** RRP8**Synonyms** KIAA0409, NML**Function**

Essential component of the eNoSC (energy-dependent nucleolar silencing) complex, a complex that mediates silencing of rDNA in response to intracellular energy status and acts by recruiting histone- modifying enzymes. The eNoSC complex is able to sense the energy status of cell: upon glucose starvation, elevation of NAD(+)/NADP(+) ratio activates SIRT1, leading to histone H3 deacetylation followed by dimethylation of H3 at 'Lys-9' (H3K9me2) by SUV39H1 and the formation of silent chromatin in the rDNA locus. In the complex, RRP8 binds to H3K9me2 and

probably acts as a methyltransferase. Its substrates are however unknown.

#### **Cellular Location**

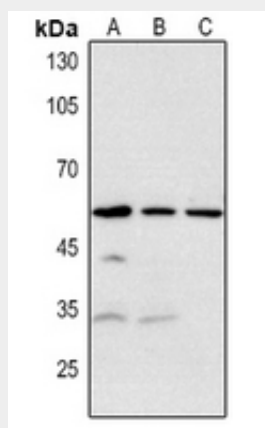
Nucleus, nucleolus Note=Localizes at rDNA locus

#### **Anti-RRP8 Antibody - Protocols**

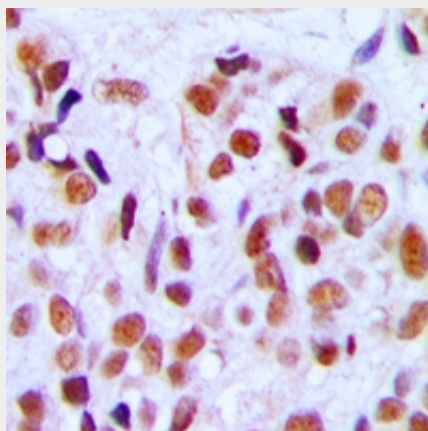
Provided below are standard protocols that you may find useful for product applications.

- [Western Blot](#)
- [Blocking Peptides](#)
- [Dot Blot](#)
- [Immunohistochemistry](#)
- [Immunofluorescence](#)
- [Immunoprecipitation](#)
- [Flow Cytometry](#)
- [Cell Culture](#)

#### **Anti-RRP8 Antibody - Images**



Western blot analysis of RRP8 expression in HEK293T (A), mouse brain (B), rat brain (C) whole cell lysates.



Immunohistochemical analysis of RRP8 staining in human breast cancer formalin fixed paraffin embedded tissue section. The section was pre-treated using heat mediated antigen retrieval with sodium citrate buffer (pH 6.0). The section was then incubated with the antibody at room

temperature and detected using an HRP conjugated compact polymer system. DAB was used as the chromogen. The section was then counterstained with haematoxylin and mounted with DPX.

**Anti-RRP8 Antibody - Background**

KLH-conjugated synthetic peptide encompassing a sequence within the center region of human RRP8. The exact sequence is proprietary.