

Anti-CMTM4 Antibody
Rabbit polyclonal antibody to CMTM4
Catalog # AP60757**Specification**

Anti-CMTM4 Antibody - Product Information

| | |
|-------------------|---------------------------|
| Application | WB, IH |
| Primary Accession | Q8IZR5 |
| Other Accession | Q8CJ61 |
| Reactivity | Human, Mouse, Rat, Bovine |
| Host | Rabbit |
| Clonality | Polyclonal |
| Calculated MW | 25828 |

Anti-CMTM4 Antibody - Additional Information**Gene ID** 146223**Other Names**

CKLFSF4; CKLF-like MARVEL transmembrane domain-containing protein 4; Chemokine-like factor superfamily member 4

Target/Specificity

Recognizes endogenous levels of CMTM4 protein.

Dilution

WB~~WB (1/500 - 1/1000), IH (1/100 - 1/200)

IH~~WB (1/500 - 1/1000), IH (1/100 - 1/200)

Format

Liquid in 0.42% Potassium phosphate, 0.87% Sodium chloride, pH 7.3, 30% glycerol, and 0.09% (W/V) sodium azide.

Storage

Store at -20 °C. Stable for 12 months from date of receipt

Anti-CMTM4 Antibody - Protein Information**Name** CMTM4 ([HGNC:19175](#))**Synonyms** CKLFSF4**Function**

Acts as a backup for CMTM6 to regulate plasma membrane expression of PD-L1/CD274, an immune inhibitory ligand critical for immune tolerance to self and antitumor immunity. May protect PD- L1/CD274 from being polyubiquitinated and targeted for degradation.

Cellular Location

Membrane; Multi-pass membrane protein

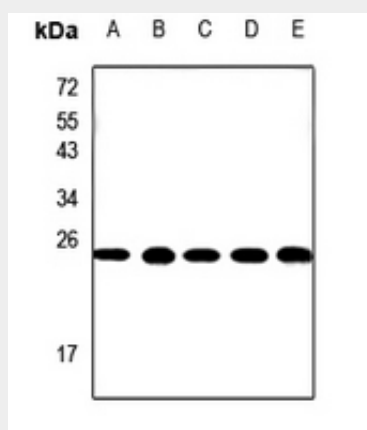
Tissue Location

Highly expressed in testis and prostate.

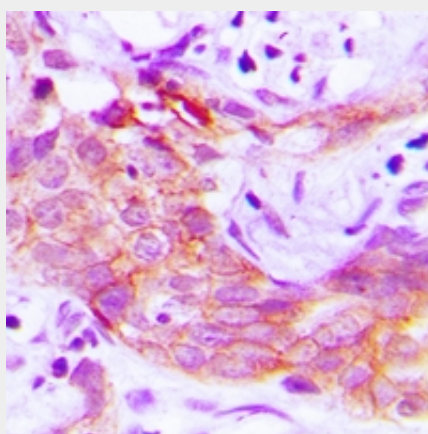
Anti-CMTM4 Antibody - Protocols

Provided below are standard protocols that you may find useful for product applications.

- [Western Blot](#)
- [Blocking Peptides](#)
- [Dot Blot](#)
- [Immunohistochemistry](#)
- [Immunofluorescence](#)
- [Immunoprecipitation](#)
- [Flow Cytometry](#)
- [Cell Culture](#)

Anti-CMTM4 Antibody - Images

Western blot analysis of CMTM4 expression in rat testis (A), CT26 (B), PC3 (C), MCF7 (D), A549 (E) whole cell lysates.



Immunohistochemical analysis of CMTM4 staining in human prostate cancer formalin fixed paraffin embedded tissue section. The section was pre-treated using heat mediated antigen retrieval with sodium citrate buffer (pH 6.0). The section was then incubated with the antibody at

room temperature and detected using an HRP conjugated compact polymer system. DAB was used as the chromogen. The section was then counterstained with haematoxylin and mounted with DPX.

Anti-CMTM4 Antibody - Background

KLH-conjugated synthetic peptide encompassing a sequence within the center region of human CMTM4. The exact sequence is proprietary.