

Anti-NXF3 Antibody
Rabbit polyclonal antibody to NXF3
Catalog # AP60772**Specification**

Anti-NXF3 Antibody - Product Information

Application	WB, IHC
Primary Accession	O9H4D5
Reactivity	Human
Host	Rabbit
Clonality	Polyclonal
Calculated MW	60102

Anti-NXF3 Antibody - Additional Information**Gene ID** 56000**Other Names**

TAPL3; Nuclear RNA export factor 3; TAP-like protein 3; TAPL-3

Target/Specificity

KLH-conjugated synthetic peptide encompassing a sequence within the center region of human NXF3. The exact sequence is proprietary.

Dilution

WB~~WB (1/500 - 1/1000), IH (1/100 - 1/200)

IHC~~1:100~500

Format

Liquid in 0.42% Potassium phosphate, 0.87% Sodium chloride, pH 7.3, 30% glycerol, and 0.09% (W/V) sodium azide.

Storage

Store at -20 °C. Stable for 12 months from date of receipt

Anti-NXF3 Antibody - Protein Information**Name** NXF3**Synonyms** TAPL3**Function**

May function as a tissue-specific nuclear mRNA export factor.

Cellular Location

Nucleus. Cytoplasm. Note=Shuttles between the nucleus and the cytoplasm

Tissue Location

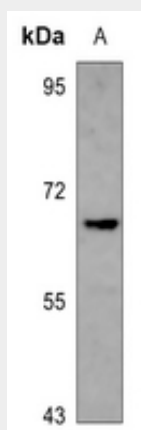
Expressed at high level in testis and at low level in a small number of tissues

Anti-NXF3 Antibody - Protocols

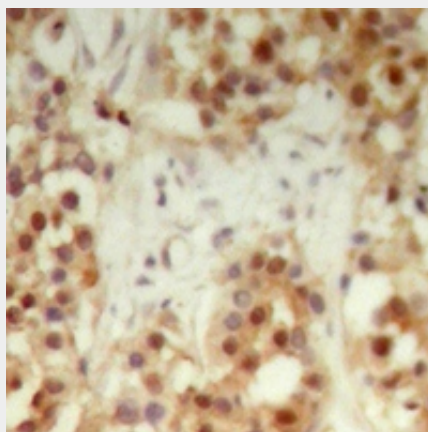
Provided below are standard protocols that you may find useful for product applications.

- [Western Blot](#)
- [Blocking Peptides](#)
- [Dot Blot](#)
- [Immunohistochemistry](#)
- [Immunofluorescence](#)
- [Immunoprecipitation](#)
- [Flow Cytometry](#)
- [Cell Culture](#)

Anti-NXF3 Antibody - Images



Western blot analysis of NXF3 expression in H1688 (A) whole cell lysates.



Immunohistochemical analysis of NXF3 staining in human breast cancer formalin fixed paraffin embedded tissue section. The section was pre-treated using heat mediated antigen retrieval with sodium citrate buffer (pH 6.0). The section was then incubated with the antibody at room temperature and detected using an HRP conjugated compact polymer system. DAB was used as the chromogen. The section was then counterstained with haematoxylin and mounted with DPX.

Anti-NXF3 Antibody - Background

KLH-conjugated synthetic peptide encompassing a sequence within the center region of human NXF3. The exact sequence is proprietary.