

Anti-LUC7L2 Antibody
Rabbit polyclonal antibody to LUC7L2
Catalog # AP60776**Specification**

Anti-LUC7L2 Antibody - Product Information

Application	WB, IHC
Primary Accession	O9Y383
Other Accession	Q7TNC4
Reactivity	Human, Mouse
Host	Rabbit
Clonality	Polyclonal
Calculated MW	46514

Anti-LUC7L2 Antibody - Additional Information**Gene ID** 51631**Other Names**

Putative RNA-binding protein Luc7-like 2

Target/Specificity

Recognizes endogenous levels of LUC7L2 protein.

Dilution

WB~~WB (1/500 - 1/1000), IH (1/100 - 1/200)

IHC~~1:100~500

Format

Liquid in 0.42% Potassium phosphate, 0.87% Sodium chloride, pH 7.3, 30% glycerol, and 0.09% (W/V) sodium azide.

Storage

Store at -20 °C.Stable for 12 months from date of receipt

Anti-LUC7L2 Antibody - Protein Information**Name** LUC7L2**Function**

May bind to RNA via its Arg/Ser-rich domain.

Cellular Location

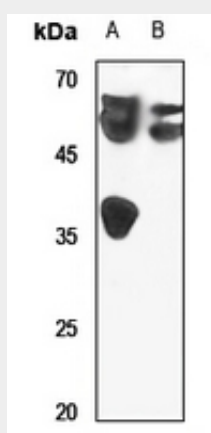
Nucleus speckle {ECO:0000250|UniProtKB:Q7TNC4}. Nucleus, nucleoplasm {ECO:0000250|UniProtKB:Q7TNC4}. Note=Colocalizes with SCNM1 and SNRNP70 in nuclear speckles {ECO:0000250|UniProtKB:Q7TNC4}

Anti-LUC7L2 Antibody - Protocols

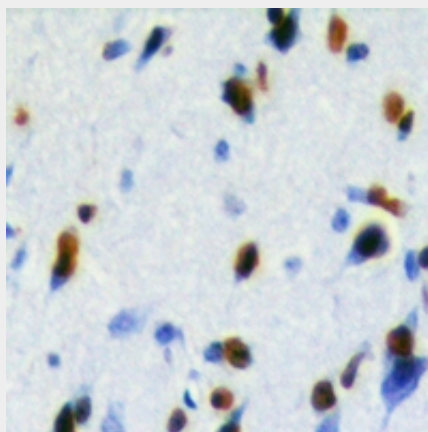
Provided below are standard protocols that you may find useful for product applications.

- [Western Blot](#)
- [Blocking Peptides](#)
- [Dot Blot](#)
- [Immunohistochemistry](#)
- [Immunofluorescence](#)
- [Immunoprecipitation](#)
- [Flow Cytometry](#)
- [Cell Culture](#)

Anti-LUC7L2 Antibody - Images



Western blot analysis of LUC7L2 expression in HEK293T (A), PC3 (B) whole cell lysates.



Immunohistochemical analysis of LUC7L2 staining in human brain formalin fixed paraffin embedded tissue section. The section was pre-treated using heat mediated antigen retrieval with sodium citrate buffer (pH 6.0). The section was then incubated with the antibody at room temperature and detected using an HRP conjugated compact polymer system. DAB was used as the chromogen. The section was then counterstained with haematoxylin and mounted with DPX.

Anti-LUC7L2 Antibody - Background

KLH-conjugated synthetic peptide encompassing a sequence within the center region of human LUC7L2. The exact sequence is proprietary.