

Anti-PWWP2B Antibody
Rabbit polyclonal antibody to PWWP2B
Catalog # AP60777**Specification**

Anti-PWWP2B Antibody - Product Information

Application	WB, IHC
Primary Accession	Q6NUJ5
Reactivity	Human
Host	Rabbit
Clonality	Polyclonal
Calculated MW	63967

Anti-PWWP2B Antibody - Additional Information**Gene ID** 170394**Other Names**

PWWP2; PWWP domain-containing protein 2B

Target/Specificity

Recognizes endogenous levels of PWWP2B protein.

Dilution

WB~~WB (1/500 - 1/1000), IH (1/100 - 1/200)

IHC~~1:100~500

Format

Liquid in 0.42% Potassium phosphate, 0.87% Sodium chloride, pH 7.3, 30% glycerol, and 0.09% (W/V) sodium azide.

Storage

Store at -20 °C. Stable for 12 months from date of receipt

Anti-PWWP2B Antibody - Protein Information**Name** PWWP2B**Synonyms** PWWP2**Function**

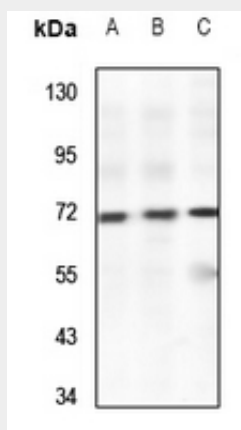
Chromatin-binding protein that acts as an adapter between distinct nucleosome components (H3K36me3 or H2A.Z) and chromatin- modifying complexes, contributing to the regulation of the levels of histone acetylation at actively transcribed genes (PubMed:30228260). Competes with CHD4 and MBD3 for interaction with MTA1 to form a NuRD subcomplex, preventing the formation of full NuRD complex (containing CHD4 and MBD3), leading to recruitment of HDACs to gene promoters resulting in turn in the deacetylation of nearby H3K27 and H2A.Z (PubMed:30228260). Plays a role in facilitating transcriptional elongation through regulation of histone acetylation (By similarity). Negatively regulates brown adipocyte thermogenesis by interacting with and stabilizing HDAC1 at the UCP1 gene promoter, thereby promoting histone deacetylation at the promoter leading to the repression of UCP1 expression (By similarity).

Anti-PWWP2B Antibody - Protocols

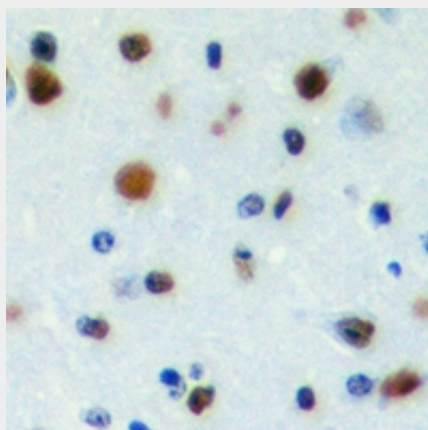
Provided below are standard protocols that you may find useful for product applications.

- [Western Blot](#)
- [Blocking Peptides](#)
- [Dot Blot](#)
- [Immunohistochemistry](#)
- [Immunofluorescence](#)
- [Immunoprecipitation](#)
- [Flow Cytometry](#)
- [Cell Culture](#)

Anti-PWWP2B Antibody - Images



Western blot analysis of PWWP2B expression in LO2 (A), MCF7 (B), SKOV3 (C) whole cell lysates.



Immunohistochemical analysis of PWWP2B staining in human brain formalin fixed paraffin embedded tissue section. The section was pre-treated using heat mediated antigen retrieval with

sodium citrate buffer (pH 6.0). The section was then incubated with the antibody at room temperature and detected using an HRP conjugated compact polymer system. DAB was used as the chromogen. The section was then counterstained with haematoxylin and mounted with DPX.

Anti-PWWP2B Antibody - Background

KLH-conjugated synthetic peptide encompassing a sequence within the center region of human PWWP2B. The exact sequence is proprietary.