

Anti-TIGD3 Antibody
Rabbit polyclonal antibody to TIGD3
Catalog # AP60785**Specification**

Anti-TIGD3 Antibody - Product Information

Application	WB, IH
Primary Accession	Q6B0B8
Reactivity	Human, Mouse, Rat
Host	Rabbit
Clonality	Polyclonal
Calculated MW	52027

Anti-TIGD3 Antibody - Additional Information**Gene ID** 220359**Other Names**

Tigger transposable element-derived protein 3

Target/Specificity

Recognizes endogenous levels of TIGD3 protein.

Dilution

WB~~WB (1/500 - 1/1000), IH (1/100 - 1/200)

IH~~WB (1/500 - 1/1000), IH (1/100 - 1/200)

Format

Liquid in 0.42% Potassium phosphate, 0.87% Sodium chloride, pH 7.3, 30% glycerol, and 0.09% (W/V) sodium azide.

Storage

Store at -20 °C. Stable for 12 months from date of receipt

Anti-TIGD3 Antibody - Protein Information**Name** TIGD3**Cellular Location**

Nucleus {ECO:0000255|PROSITE-ProRule:PRU00320, ECO:0000255|PROSITE-ProRule:PRU00583}

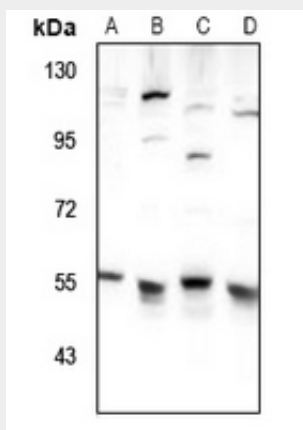
Anti-TIGD3 Antibody - Protocols

Provided below are standard protocols that you may find useful for product applications.

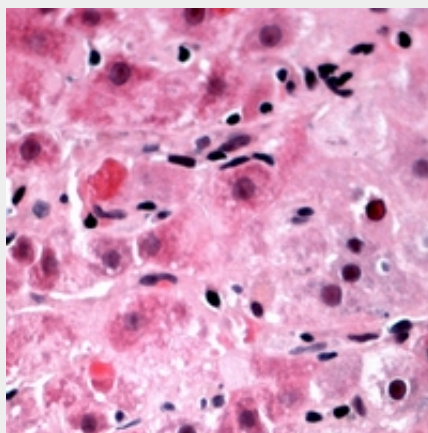
- [Western Blot](#)

- [Blocking Peptides](#)
- [Dot Blot](#)
- [Immunohistochemistry](#)
- [Immunofluorescence](#)
- [Immunoprecipitation](#)
- [Flow Cytometry](#)
- [Cell Culture](#)

Anti-TIGD3 Antibody - Images



Western blot analysis of TIGD3 expression in PC12 (A), BV2 (B), COS7 (C), HeLa (D) whole cell lysates.



Immunohistochemical analysis of TIGD3 staining in human liver cancer formalin fixed paraffin embedded tissue section. The section was pre-treated using heat mediated antigen retrieval with sodium citrate buffer (pH 6.0). The section was then incubated with the antibody at room temperature and detected using an HRP conjugated compact polymer system. AEC was used as the chromogen. The section was then counterstained with haematoxylin and mounted with DPX.

Anti-TIGD3 Antibody - Background

KLH-conjugated synthetic peptide encompassing a sequence within the C-term region of human TIGD3. The exact sequence is proprietary.