

Anti-MTIF3 Antibody
Rabbit polyclonal antibody to MTIF3
Catalog # AP60786**Specification**

Anti-MTIF3 Antibody - Product Information

Application	WB, IH
Primary Accession	Q9H2K0
Reactivity	Human, Rat
Host	Rabbit
Clonality	Polyclonal
Calculated MW	31725

Anti-MTIF3 Antibody - Additional Information**Gene ID** 219402**Other Names**

Translation initiation factor IF-3 mitochondrial; IF-3(Mt); IF-3Mt; IF3(mt); IF3mt

Target/Specificity

Recognizes endogenous levels of MTIF3 protein.

Dilution

WB~~WB (1/500 - 1/1000), IH (1/100 - 1/200)

IH~~WB (1/500 - 1/1000), IH (1/100 - 1/200)

Format

Liquid in 0.42% Potassium phosphate, 0.87% Sodium chloride, pH 7.3, 30% glycerol, and 0.09% (W/V) sodium azide.

Storage

Store at -20 °C. Stable for 12 months from date of receipt

Anti-MTIF3 Antibody - Protein Information**Name** MTIF3**Function**

IF-3 binds to the 28S ribosomal subunit and shifts the equilibrium between 55S ribosomes and their 39S and 28S subunits in favor of the free subunits, thus enhancing the availability of 28S subunits on which protein synthesis initiation begins.

Cellular Location

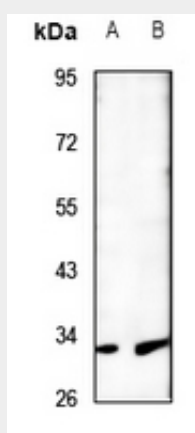
Mitochondrion.

Anti-MTIF3 Antibody - Protocols

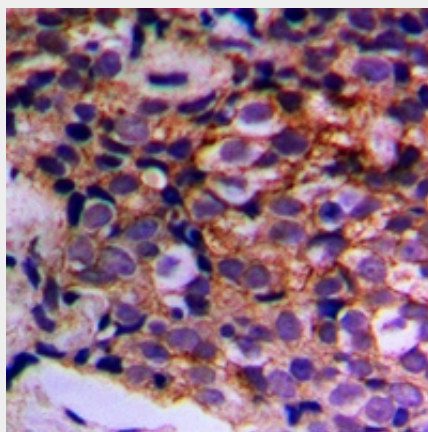
Provided below are standard protocols that you may find useful for product applications.

- [Western Blot](#)
- [Blocking Peptides](#)
- [Dot Blot](#)
- [Immunohistochemistry](#)
- [Immunofluorescence](#)
- [Immunoprecipitation](#)
- [Flow Cytometry](#)
- [Cell Culture](#)

Anti-MTIF3 Antibody - Images



Western blot analysis of MTIF3 expression in HCT116 (A), PC12 (B) whole cell lysates.



Immunohistochemical analysis of MTIF3 staining in human prostate cancer formalin fixed paraffin embedded tissue section. The section was pre-treated using heat mediated antigen retrieval with sodium citrate buffer (pH 6.0). The section was then incubated with the antibody at room temperature and detected using an HRP conjugated compact polymer system. DAB was used as the chromogen. The section was then counterstained with haematoxylin and mounted with DPX.

Anti-MTIF3 Antibody - Background

KLH-conjugated synthetic peptide encompassing a sequence within the center region of human MTIF3. The exact sequence is proprietary.