

**Anti-ZP1 Antibody**  
**Rabbit polyclonal antibody to ZP1**  
**Catalog # AP60788****Specification**

---

**Anti-ZP1 Antibody - Product Information**

Application	WB, IH
Primary Accession	<a href="#">P60852</a>
Reactivity	Human, Mouse, Rat
Host	Rabbit
Clonality	Polyclonal
Calculated MW	70049

**Anti-ZP1 Antibody - Additional Information****Gene ID** 22917**Other Names**

Zona pellucida sperm-binding protein 1; Zona pellucida glycoprotein 1; Zp-1

**Target/Specificity**

Recognizes endogenous levels of ZP1 protein.

**Dilution**

WB~~WB (1/500 - 1/1000), IH (1/100 - 1/200)

IH~~WB (1/500 - 1/1000), IH (1/100 - 1/200)

**Format**

Liquid in 0.42% Potassium phosphate, 0.87% Sodium chloride, pH 7.3, 30% glycerol, and 0.09% (W/V) sodium azide.

**Storage**

Store at -20 °C. Stable for 12 months from date of receipt

**Anti-ZP1 Antibody - Protein Information****Name** ZP1**Function**

Component of the zona pellucida, an extracellular matrix surrounding oocytes which mediates sperm binding, induction of the acrosome reaction and prevents post-fertilization polyspermy. The zona pellucida is composed of 3 to 4 glycoproteins, ZP1, ZP2, ZP3, and ZP4. ZP1 ensures the structural integrity of the zona pellucida.

**Cellular Location**

[Processed zona pellucida sperm-binding protein 1]: Zona pellucida

**Tissue Location**

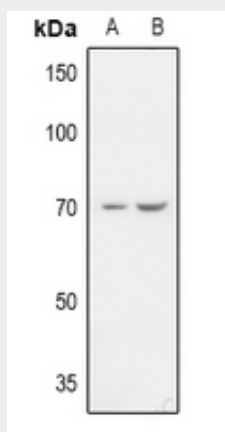
Expressed in oocytes (at protein level).

### Anti-ZP1 Antibody - Protocols

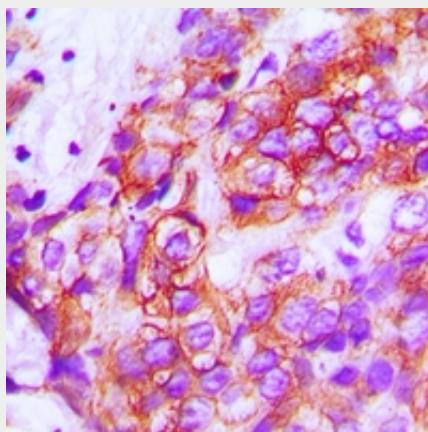
Provided below are standard protocols that you may find useful for product applications.

- [Western Blot](#)
- [Blocking Peptides](#)
- [Dot Blot](#)
- [Immunohistochemistry](#)
- [Immunofluorescence](#)
- [Immunoprecipitation](#)
- [Flow Cytometry](#)
- [Cell Culture](#)

### Anti-ZP1 Antibody - Images



Western blot analysis of ZP1 expression in mouse kidney (A), rat spleen (B) whole cell lysates.



Immunohistochemical analysis of ZP1 staining in human breast cancer formalin fixed paraffin embedded tissue section. The section was pre-treated using heat mediated antigen retrieval with sodium citrate buffer (pH 6.0). The section was then incubated with the antibody at room temperature and detected using an HRP conjugated compact polymer system. DAB was used as the chromogen. The section was then counterstained with haematoxylin and mounted with DPX.

### Anti-ZP1 Antibody - Background

KLH-conjugated synthetic peptide encompassing a sequence within the center region of human ZP1. The exact sequence is proprietary.