

**Anti-IGFBP1 Antibody**  
**Rabbit polyclonal antibody to IGFBP1**  
**Catalog # AP60790****Specification**

---

**Anti-IGFBP1 Antibody - Product Information**

Application	WB
Primary Accession	<a href="#">P08833</a>
Reactivity	Human, Monkey
Host	Rabbit
Clonality	Polyclonal
Calculated MW	27904

**Anti-IGFBP1 Antibody - Additional Information****Gene ID** 3484**Other Names**

IBP1; Insulin-like growth factor-binding protein 1; IBP-1; IGF-binding protein 1; IGFBP-1; Placental protein 12; PP12

**Target/Specificity**

KLH-conjugated synthetic peptide encompassing a sequence within the center region of human IGFBP1. The exact sequence is proprietary.

**Dilution**

WB~~WB (1/500 - 1/1000)

**Format**

Liquid in 0.42% Potassium phosphate, 0.87% Sodium chloride, pH 7.3, 30% glycerol, and 0.09% (W/V) sodium azide.

**Storage**

Store at -20 °C. Stable for 12 months from date of receipt

**Anti-IGFBP1 Antibody - Protein Information****Name** IGFBP1**Synonyms** IBP1**Function**

Multifunctional protein that plays a critical role in regulating the availability of IGFs such as IGF1 and IGF2 to their receptors and thereby regulates IGF-mediated cellular processes including cell migration, proliferation, differentiation or apoptosis in a cell-type specific manner (PubMed:<a href="http://www.uniprot.org/citations/11397844" target="\_blank">11397844</a>, PubMed:<a href="http://www.uniprot.org/citations/15972819" target="\_blank">15972819</a>). Also plays a positive role in cell migration by interacting with integrin ITGA5:ITGB1 through its RGD motif

(PubMed:<a href="http://www.uniprot.org/citations/7504269" target="\_blank">7504269</a>). Mechanistically, binding to integrins leads to activation of focal adhesion kinase/PTK2 and stimulation of the mitogen-activated protein kinase (MAPK) pathway (PubMed:<a href="http://www.uniprot.org/citations/11397844" target="\_blank">11397844</a>). Regulates cardiomyocyte apoptosis by suppressing HIF-1alpha/HIF1A ubiquitination and subsequent degradation (By similarity).

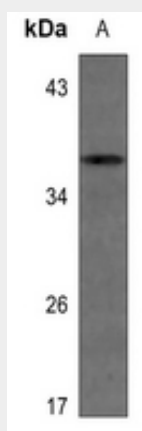
**Cellular Location**  
Secreted.

### Anti-IGFBP1 Antibody - Protocols

Provided below are standard protocols that you may find useful for product applications.

- [Western Blot](#)
- [Blocking Peptides](#)
- [Dot Blot](#)
- [Immunohistochemistry](#)
- [Immunofluorescence](#)
- [Immunoprecipitation](#)
- [Flow Cytometry](#)
- [Cell Culture](#)

### Anti-IGFBP1 Antibody - Images



Western blot analysis of IGFBP1 expression in U2OS (A) whole cell lysates.

### Anti-IGFBP1 Antibody - Background

KLH-conjugated synthetic peptide encompassing a sequence within the center region of human IGFBP1. The exact sequence is proprietary.