

Anti-GPR180 Antibody
Rabbit polyclonal antibody to GPR180
Catalog # AP60802

Specification

Anti-GPR180 Antibody - Product Information

Application	WB
Primary Accession	Q86V85
Other Accession	Q8BPS4
Reactivity	Human, Mouse, Rat
Host	Rabbit
Clonality	Polyclonal
Calculated MW	49395

Anti-GPR180 Antibody - Additional Information

Gene ID 160897

Other Names

ITR; Integral membrane protein GPR180; Intimal thickness-related receptor

Target/Specificity

KLH-conjugated synthetic peptide encompassing a sequence within the center region of human GPR180. The exact sequence is proprietary.

Dilution

WB~~WB (1/500 - 1/1000)

Format

Liquid in 0.42% Potassium phosphate, 0.87% Sodium chloride, pH 7.3, 30% glycerol, and 0.09% (W/V) sodium azide.

Storage

Store at -20 °C. Stable for 12 months from date of receipt

Anti-GPR180 Antibody - Protein Information

Name GPR180

Synonyms ITR

Cellular Location

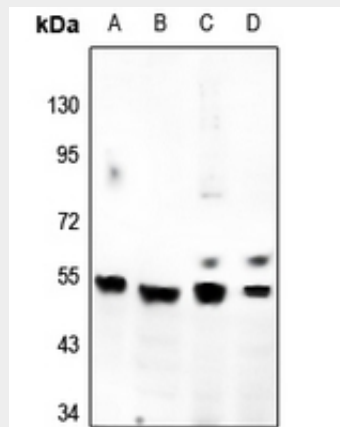
Membrane; Multi-pass membrane protein

Anti-GPR180 Antibody - Protocols

Provided below are standard protocols that you may find useful for product applications.

- [Western Blot](#)
- [Blocking Peptides](#)
- [Dot Blot](#)
- [Immunohistochemistry](#)
- [Immunofluorescence](#)
- [Immunoprecipitation](#)
- [Flow Cytometry](#)
- [Cell Culture](#)

Anti-GPR180 Antibody - Images



Western blot analysis of GPR180 expression in BV2 (A), PC12 (B), A549 (C), HepG2 (D) whole cell lysates.

Anti-GPR180 Antibody - Background

KLH-conjugated synthetic peptide encompassing a sequence within the center region of human GPR180. The exact sequence is proprietary.