

Anti-JUNB Antibody
Rabbit polyclonal antibody to JUNB
Catalog # AP60805**Specification**

Anti-JUNB Antibody - Product Information

Application	WB, IP, IHC
Primary Accession	P17275
Other Accession	P09450
Reactivity	Human, Mouse, Rat, Bovine
Host	Rabbit
Clonality	Polyclonal
Calculated MW	35879

Anti-JUNB Antibody - Additional Information**Gene ID** 3726**Other Names**

Transcription factor jun-B

Target/Specificity

KLH-conjugated synthetic peptide encompassing a sequence within the center region of human JUNB. The exact sequence is proprietary.

Dilution

WB~~WB (1/500 - 1/1000), IH (1/100 - 1/200), IP (1/10 - 1/100)

IP~~N/A

IHC~~1:100~500

Format

Liquid in 0.42% Potassium phosphate, 0.87% Sodium chloride, pH 7.3, 30% glycerol, and 0.09% (W/V) sodium azide.

Storage

Store at -20 °C. Stable for 12 months from date of receipt

Anti-JUNB Antibody - Protein Information**Name** JUNB**Function**

Transcription factor involved in regulating gene activity following the primary growth factor response. Binds to the DNA sequence 5'-TGA[GC]TCA-3'. Heterodimerizes with proteins of the FOS family to form an AP-1 transcription complex, thereby enhancing its DNA binding activity to an AP-1 consensus sequence and its transcriptional activity (By similarity).

Cellular Location

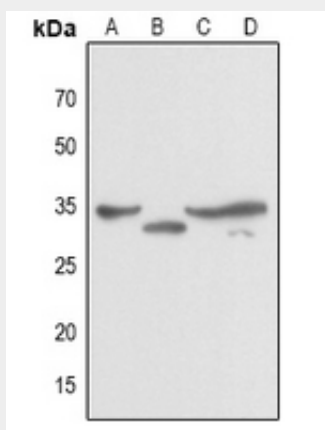
Nucleus.

Anti-JUNB Antibody - Protocols

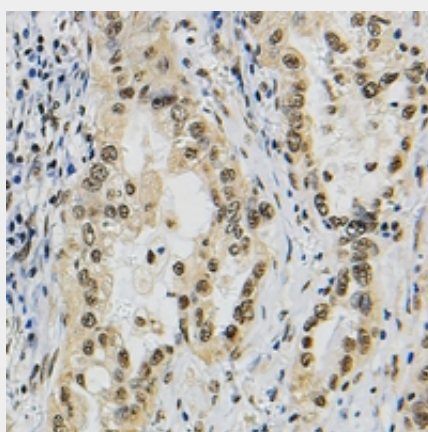
Provided below are standard protocols that you may find useful for product applications.

- [Western Blot](#)
- [Blocking Peptides](#)
- [Dot Blot](#)
- [Immunohistochemistry](#)
- [Immunofluorescence](#)
- [Immunoprecipitation](#)
- [Flow Cytometry](#)
- [Cell Culture](#)

Anti-JUNB Antibody - Images



Western blot analysis of JUNB expression in mouse muscle (A), mouse liver (B), rat muscle (C), rat liver (D) whole cell lysates.



Immunohistochemical analysis of JUNB staining in human lung cancer formalin fixed paraffin embedded tissue section. The section was pre-treated using heat mediated antigen retrieval with sodium citrate buffer (pH 6.0). The section was then incubated with the antibody at room temperature and detected using an HRP conjugated compact polymer system. DAB was used as the chromogen. The section was then counterstained with haematoxylin and mounted with DPX.

Anti-JUNB Antibody - Background

KLH-conjugated synthetic peptide encompassing a sequence within the center region of human JUNB. The exact sequence is proprietary.