

**Anti-Inhibin beta C Antibody**  
**Rabbit polyclonal antibody to Inhibin beta C**  
**Catalog # AP60806****Specification**

---

**Anti-Inhibin beta C Antibody - Product Information**

Application	WB
Primary Accession	<a href="#">P55103</a>
Reactivity	Human
Host	Rabbit
Clonality	Polyclonal
Calculated MW	38238

**Anti-Inhibin beta C Antibody - Additional Information****Gene ID** 3626**Other Names**

Inhibin beta C chain; Activin beta-C chain

**Target/Specificity**

Recognizes endogenous levels of Inhibin beta C protein.

**Dilution**

WB~~WB (1/500 - 1/1000)

**Format**

Liquid in 0.42% Potassium phosphate, 0.87% Sodium chloride, pH 7.3, 30% glycerol, and 0.09% (W/V) sodium azide.

**Storage**

Store at -20 °C.Stable for 12 months from date of receipt

**Anti-Inhibin beta C Antibody - Protein Information****Name** INHBC**Function**

Inhibins and activins inhibit and activate, respectively, the secretion of follitropin by the pituitary gland. Inhibins/activins are involved in regulating a number of diverse functions such as hypothalamic and pituitary hormone secretion, gonadal hormone secretion, germ cell development and maturation, erythroid differentiation, insulin secretion, nerve cell survival, embryonic axial development or bone growth, depending on their subunit composition. Inhibins appear to oppose the functions of activins.

**Cellular Location**

Secreted.

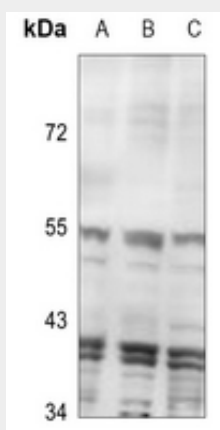
**Tissue Location**

Expressed in benign prostatic hyperplasia.

**Anti-Inhibin beta C Antibody - Protocols**

Provided below are standard protocols that you may find useful for product applications.

- [Western Blot](#)
- [Blocking Peptides](#)
- [Dot Blot](#)
- [Immunohistochemistry](#)
- [Immunofluorescence](#)
- [Immunoprecipitation](#)
- [Flow Cytometry](#)
- [Cell Culture](#)

**Anti-Inhibin beta C Antibody - Images**

Western blot analysis of Inhibin beta C expression in MCF7 (A), PC3 (B), HepG2 (C) whole cell lysates.

**Anti-Inhibin beta C Antibody - Background**

KLH-conjugated synthetic peptide encompassing a sequence within the center region of human Inhibin beta C. The exact sequence is proprietary.