

Anti-VPS4B Antibody
Rabbit polyclonal antibody to VPS4B
Catalog # AP60809**Specification**

Anti-VPS4B Antibody - Product Information

Application	WB
Primary Accession	O75351
Reactivity	Human
Host	Rabbit
Clonality	Polyclonal
Calculated MW	49302

Anti-VPS4B Antibody - Additional Information**Gene ID** 9525**Other Names**

SKD1; VPS42; Vacuolar protein sorting-associated protein 4B; Cell migration-inducing gene 1 protein; Suppressor of K(+) transport growth defect 1; Protein SKD1

Target/Specificity

Recognizes endogenous levels of VPS4B protein.

Dilution

WB~~WB (1/500 - 1/1000)

Format

Liquid in 0.42% Potassium phosphate, 0.87% Sodium chloride, pH 7.3, 30% glycerol, and 0.09% (W/V) sodium azide.

Storage

Store at -20 °C. Stable for 12 months from date of receipt

Anti-VPS4B Antibody - Protein Information**Name** VPS4B ([HGNC:10895](#))**Synonyms** SKD1, VPS42**Function**

Involved in late steps of the endosomal multivesicular bodies (MVB) pathway. Recognizes membrane-associated ESCRT-III assemblies and catalyzes their ATP-dependent disassembly, possibly in combination with membrane fission (PubMed:18687924). Redistributes the ESCRT-III components to the cytoplasm for further rounds of MVB sorting. MVBs contain intraluminal vesicles (ILVs) that are generated by invagination and scission from the limiting membrane of the endosome and mostly are delivered to lysosomes enabling degradation of

membrane proteins, such as stimulated growth factor receptors, lysosomal enzymes and lipids. VPS4A/B are required for the exosomal release of SDCBP, CD63 and syndecan (PubMed:22660413).

Cellular Location

Late endosome membrane {ECO:0000250|UniProtKB:P46467}; Peripheral membrane protein. Note=Membrane-associated in the prevacuolar endosomal compartment. Localized in HIV-1 particles purified from acutely infected cells.

Tissue Location

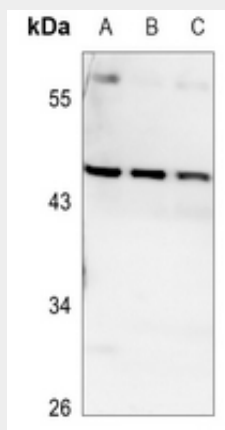
Ubiquitously expressed.

Anti-VPS4B Antibody - Protocols

Provided below are standard protocols that you may find useful for product applications.

- [Western Blot](#)
- [Blocking Peptides](#)
- [Dot Blot](#)
- [Immunohistochemistry](#)
- [Immunofluorescence](#)
- [Immunoprecipitation](#)
- [Flow Cytometry](#)
- [Cell Culture](#)

Anti-VPS4B Antibody - Images



Western blot analysis of VPS4B expression in HEK293T (A), A549 (B), H1688 (C) whole cell lysates.

Anti-VPS4B Antibody - Background

KLH-conjugated synthetic peptide encompassing a sequence within the center region of human VPS4B. The exact sequence is proprietary.