

Anti-AT1 Antibody
Rabbit polyclonal antibody to AT1
Catalog # AP60812

Specification

Anti-AT1 Antibody - Product Information

Application	WB, IF/IC, IHC
Primary Accession	P30556
Reactivity	Human, Mouse, Rat, Pig, Bovine, SARS
Host	Rabbit
Clonality	Polyclonal
Calculated MW	41061

Anti-AT1 Antibody - Additional Information

Gene ID 185

Other Names

AGTR1A; AGTR1B; AT2R1; AT2R1B; Type-1 angiotensin II receptor; AT1AR; AT1BR; Angiotensin II type-1 receptor; AT1

Target/Specificity

Recognizes endogenous levels of AT1 protein.

Dilution

WB~~WB (1/500 - 1/2000), IH (1/50 - 1/200), IF/IC (1/50 - 1/100)
IF/IC~~N/A
IHC~~1:100~500

Format

Liquid in 0.42% Potassium phosphate, 0.87% Sodium chloride, pH 7.3, 30% glycerol, and 0.09% (W/V) sodium azide.

Storage

Store at -20 °C. Stable for 12 months from date of receipt

Anti-AT1 Antibody - Protein Information

Name AGTR1 ([HGNC:336](#))

Function

Receptor for angiotensin II, a vasoconstricting peptide, which acts as a key regulator of blood pressure and sodium retention by the kidney (PubMed:15611106, PubMed:1567413, PubMed:25913193, PubMed:26420482, PubMed:30639100, PubMed:32079768, PubMed:8987975). The activated receptor in turn couples to G-alpha proteins G(q) (GNAQ, GNA11, GNA14 or GNA15) and thus activates phospholipase C and increases the cytosolic Ca(2+) concentrations, which in turn triggers cellular responses such as stimulation of protein kinase C (PubMed:15611106).

Cellular Location

Cell membrane; Multi-pass membrane protein

Tissue Location

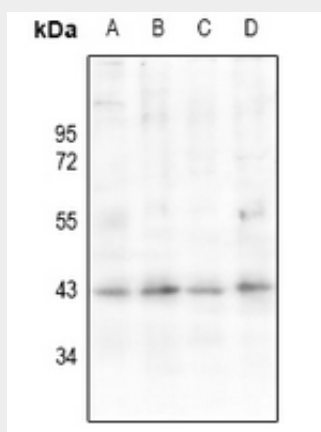
Liver, lung, adrenal and adrenocortical adenomas.

Anti-AT1 Antibody - Protocols

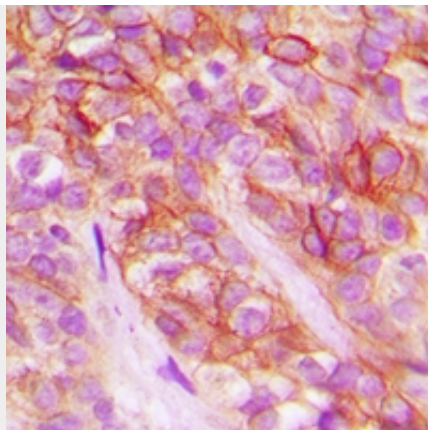
Provided below are standard protocols that you may find useful for product applications.

- [Western Blot](#)
- [Blocking Peptides](#)
- [Dot Blot](#)
- [Immunohistochemistry](#)
- [Immunofluorescence](#)
- [Immunoprecipitation](#)
- [Flow Cytometry](#)
- [Cell Culture](#)

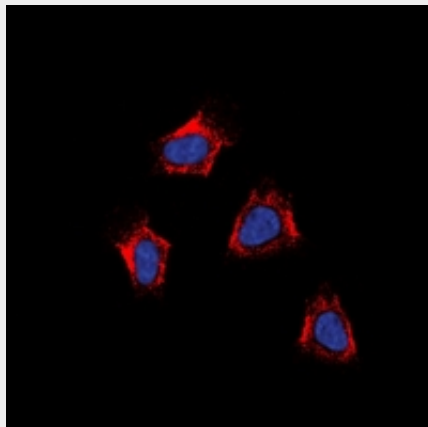
Anti-AT1 Antibody - Images



Western blot analysis of AT1 expression in C6 (A), PC3 (B), U87MG (C), HCC827 (D) whole cell lysates.



Immunohistochemical analysis of AT1 staining in human breast cancer formalin fixed paraffin embedded tissue section. The section was pre-treated using heat mediated antigen retrieval with sodium citrate buffer (pH 6.0). The section was then incubated with the antibody at room temperature and detected using an HRP conjugated compact polymer system. DAB was used as the chromogen. The section was then counterstained with haematoxylin and mounted with DPX.



Immunofluorescent analysis of AT1 staining in K562 cells. Formalin-fixed cells were permeabilized with 0.1% Triton X-100 in TBS for 5-10 minutes and blocked with 3% BSA-PBS for 30 minutes at room temperature. Cells were probed with the primary antibody in 3% BSA-PBS and incubated overnight at 4 °C in a humidified chamber. Cells were washed with PBST and incubated with a DyLight 594-conjugated secondary antibody (red) in PBS at room temperature in the dark. DAPI was used to stain the cell nuclei (blue).

Anti-AT1 Antibody - Background

KLH-conjugated synthetic peptide encompassing a sequence within the center region of human AT1. The exact sequence is proprietary.