

Anti-TEAD2 Antibody
Rabbit polyclonal antibody to TEAD2
Catalog # AP60818**Specification**

Anti-TEAD2 Antibody - Product Information

Application	WB, IF/IC, IHC
Primary Accession	Q15562
Other Accession	P48301
Reactivity	Human, Mouse, Rat
Host	Rabbit
Clonality	Polyclonal
Calculated MW	49243

Anti-TEAD2 Antibody - Additional Information**Gene ID** 8463**Other Names**

TEF4; Transcriptional enhancer factor TEF-4; TEA domain family member 2; TEAD-2

Target/Specificity

KLH-conjugated synthetic peptide encompassing a sequence within the center region of human TEAD2. The exact sequence is proprietary.

Dilution

WB~~WB (1/500 - 1/2000), IH (1/50 - 1/200), IF/IC (1/50 - 1/100), ChIP (1/100 - 1/500)

IF/IC~~N/A

IHC~~1:100~500

Format

Liquid in 0.42% Potassium phosphate, 0.87% Sodium chloride, pH 7.3, 30% glycerol, and 0.09% (W/V) sodium azide.

Storage

Store at -20 °C. Stable for 12 months from date of receipt

Anti-TEAD2 Antibody - Protein Information**Name** TEAD2**Synonyms** TEF4**Function**

Transcription factor which plays a key role in the Hippo signaling pathway, a pathway involved in organ size control and tumor suppression by restricting proliferation and promoting apoptosis. The core of this pathway is composed of a kinase cascade wherein MST1/MST2, in complex with its regulatory protein SAV1, phosphorylates and activates LATS1/2 in complex with its regulatory

protein MOB1, which in turn phosphorylates and inactivates YAP1 oncoprotein and WWTR1/TAZ. Acts by mediating gene expression of YAP1 and WWTR1/TAZ, thereby regulating cell proliferation, migration and epithelial mesenchymal transition (EMT) induction. Binds to the SPH and GT-IIC 'enhancers' (5'-GTGGAATGT-3'). May be involved in the gene regulation of neural development. Binds to the M-CAT motif.

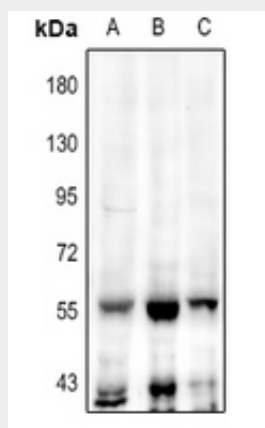
Cellular Location

Nucleus.

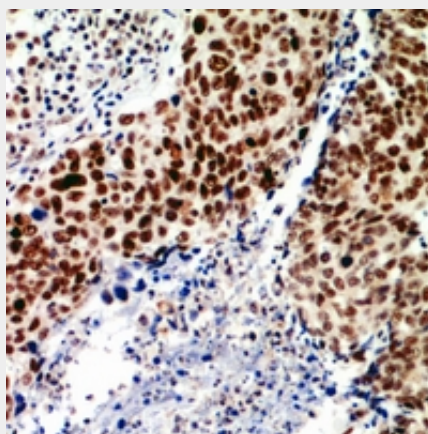
Anti-TEAD2 Antibody - Protocols

Provided below are standard protocols that you may find useful for product applications.

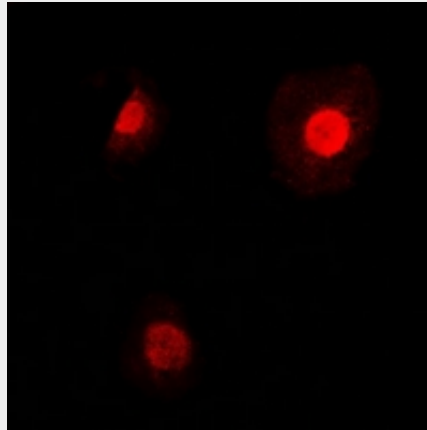
- [Western Blot](#)
- [Blocking Peptides](#)
- [Dot Blot](#)
- [Immunohistochemistry](#)
- [Immunofluorescence](#)
- [Immunoprecipitation](#)
- [Flow Cytometry](#)
- [Cell Culture](#)

Anti-TEAD2 Antibody - Images

Western blot analysis of TEAD2 expression in CT26 (A), A549 (B), HCT116 (C) whole cell lysates.



Immunohistochemical analysis of TEAD2 staining in human breast cancer formalin fixed paraffin embedded tissue section. The section was pre-treated using heat mediated antigen retrieval with sodium citrate buffer (pH 6.0). The section was then incubated with the antibody at room temperature and detected using an HRP conjugated compact polymer system. DAB was used as the chromogen. The section was then counterstained with haematoxylin and mounted with DPX.



Immunofluorescent analysis of TEAD2 staining in HepG2 cells. Formalin-fixed cells were permeabilized with 0.1% Triton X-100 in TBS for 5-10 minutes and blocked with 3% BSA-PBS for 30 minutes at room temperature. Cells were probed with the primary antibody in 3% BSA-PBS and incubated overnight at 4 °C in a humidified chamber. Cells were washed with PBST and incubated with a DyLight 594-conjugated secondary antibody (red) in PBS at room temperature in the dark.

Anti-TEAD2 Antibody - Background

KLH-conjugated synthetic peptide encompassing a sequence within the center region of human TEAD2. The exact sequence is proprietary.